



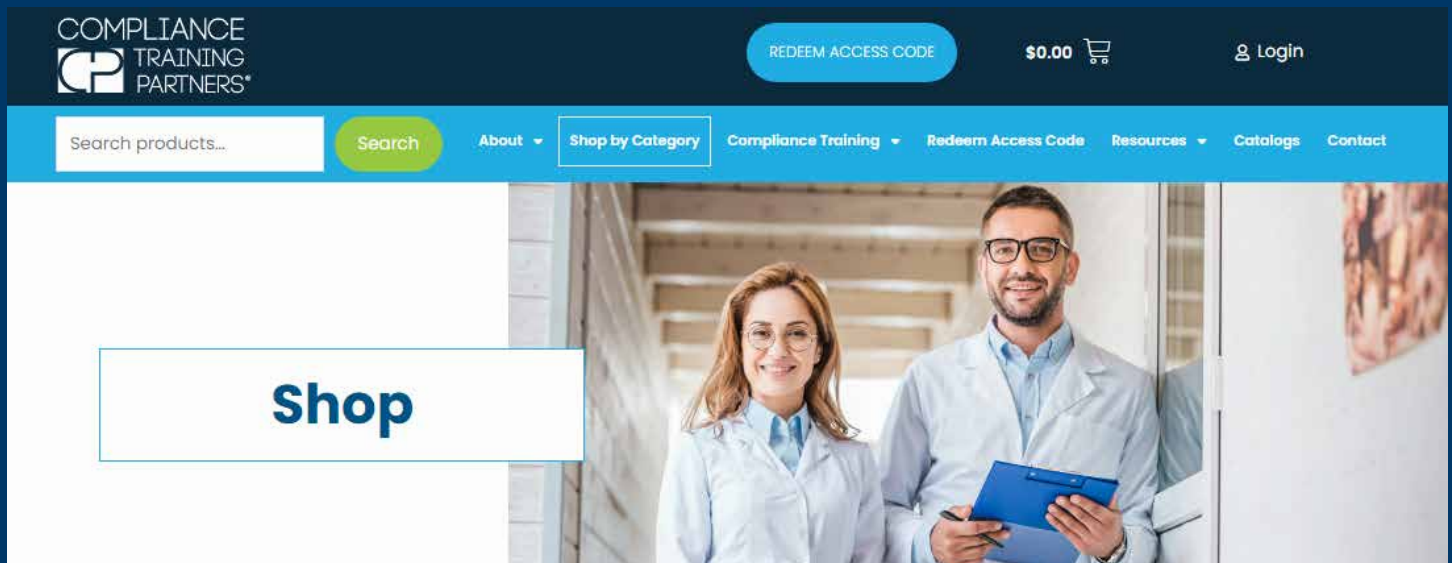
ANIMAL HEALTH

OSHA Compliance Products, and Services

TO ORDER VISIT
[COMPLIANCETRAININGPARTNERS.COM](https://www.compliancetrainingpartners.com)
P. 888.388.4782



TO ORDER visit
ComplianceTrainingPartners.com/Shop/



ComplianceTrainingPartners.com

P. 888.388.4782

1919 Federal Blvd, Ann Arbor, MI 48103



Dear Animal Health Professional,

OSHA Compliance is a concern for all businesses and animal health facilities are no exception. OSHA regulations are designed to make your clinic a better place to work, and implementing them will create a safer environment for all employees.

Some of the regulated areas of concern include:

- The GHS standard for chemical safety
- USP 800
- Prevention of zoonotic disease
- Radiation safety
- Ventilation
- Noise
- Electrical safety
- Emergency preparedness
- Bites and scratches
- Personal protective equipment
- Walking and working surfaces
- Medical and first aid
- Hazardous materials
- Means of egress
- Recordkeeping
- OSHA inspection and citation

The products and services found on the following pages are designed to help you and your team efficiently achieve compliance with safety regulations that affect your office. We feel certain that by utilizing them, your clinic will not only achieve compliance but will become a safer and healthier place in which to work.

The Compliance Training Partners Team

TABLE OF CONTENTS



6 - 10	Online Training Programs	OSHA Compliance and Zoonotic Disease Prevention Fire Safety & Disaster Training Sexual Harassment
11 - 13	Compliance Programs	OSHA Compliance Checklist OSHA Compliance for Animal Health Facilities Special Programs
14 - 17	Spill Kits & Utility Gloves	Master Spill Kit Mercury Spill Kit Biological Spill Kit Chemical Spill Kit Chemo Spill Kit Nitrile Utility Gloves
18 - 20	Monitoring Programs	X-Ray Monitoring Service Ethylene Oxide Vapor Monitor Formaldehyde/Glutaraldehyde Vapor Monitor Anesthetic Vapor Monitor
21 - 33	Safety/Infection Control Products	SDS Binder Contaminated Instrument Kaddy- Small Contaminated Instrument Kaddy- Large Safety Glasses Safety Googles Side Shields LaserShields® Protective Eyeware Aquasafe® Emergency Eyewash Station Aquasafe® Emergency Eyewash Station Angled Aquasafe® Wall Mounted Eyewash Station Aquasafe® Portable Eyewash Station Bacteriostatic Preservative Aquasafe® Eyewash Sign Aquasafe® Eyewash Label Aquasafe® Eyewash Inspection Tags Aquasafe® Eyewash Caps Aquasafe® Eliminator Valve Adapter Aquasafe® Evacuation System Cleaner AquaSafe® Enzymatic Cleaner Single Handed Needle Recapper Scalpel Blade Remover First-Aid Safety Kit Disposable Ear Plugs Laundry Bag and Stand

TABLE OF CONTENTS



		Infectious Waste Bags Fire Extinguisher
34 - 36	Laminated Wall Charts	Fire Safety Wall Chart Labor Law Wall Chart GHS Hazardous Materials Wall Chart First Aid Response Wall Chart USP 800 Compliance Wall Chart
37 - 44	Labels / Signs	Standard Precautions STOP! Wash Hands Handwashing Technique Handwashing Technique - Bilingual (English/Spanish) Variety Pack of Infection Control Labels OSHA Compliance Labeling Kit Variety Pack of Labels GHS Chemical Product Labels Radiation Caution Labels Biohazard Warning Labels 3x3 Waterproof Biohazard Labels Biohazard Storage Labels Emergency Signs Glow In the Dark Medical Gas Warning Sign Laser Sign Caution Radiation Sign Noise Warning Sign Hazardous Drug Sign and Labels Hazardous Drug Warning Labels
45 - 54	General Information	Frequently Asked Questions Ordering Information Audit Checklists Notes

A woman with curly hair, wearing a white lab coat, is holding a tablet and smiling at a golden retriever. The dog is looking up at her with its tongue out. The background is slightly blurred, showing what appears to be a veterinary or training environment. The entire image has a blue tint.

Online Training Programs

OSHA and Infection Control Compliance Made Easy with Compli™ Vet

At **Compliance Training Partners**, our training programs are designed to deliver genuine interactive content and features to maximize user comprehension in a single source. Train with the best and most experienced veterinary compliance experts on **OSHA, Infection Control, and prevention of Zoonotic Disease** rules and regulations through convenient, easy-to-follow online classes.

Compli™ Vet will help you and your animal hospital effortlessly advance its compliance proficiency by training your entire veterinary team online at your pace while earning valuable CE credit.



With Compli™ Vet You Get Training:

- Exceptional, interactive education solutions for your entire team
- Informative, simple-to-understand materials
- Flexible, convenient training options with fully online programs
- OSHA, Infection Control training, and prevention of Zoonotic Disease
- Sexual Harassment training
- Access to exclusive CE webinars
- Ability to earn RACE CE credits

With Compli™ Vet You Get Oversight:

- Access to a centralized compliance dashboard for record-keeping of core areas of compliance such as weekly eyewash checks, monthly fire extinguisher checks, spore testing of autoclaves, and more
- Exclusive access to the Compli™ Vet Facility Audit Checklist app, which enables you to perform a detailed OSHA and Infection Control review of your entire facility
- Regional Manager oversight functions
- Centralized record-keeping of your team's compliance training certificates
- Professional License Vault: Store your state and federal licenses securely, with automated renewal reminders

With Compli™ Vet You Get Support:

- On-demand, expert compliance support via toll-free phone, email, and online chat
- Assistance in responding to OSHA inspections
- Guidance to required and recommended products

Compli™ Vet Online Learning Center Yearly Subscription

COM1AH	1-4 locations	\$595 retail per location*
COM5AH	5-10 locations	\$495 retail per location*
COM11AH	11-24 locations	\$450 retail per location*
COM25AH	25-49 locations	\$399 retail per location*
COM50AH	50-74 locations	\$349 retail per location*
COM75AH	75+ locations	\$299 retail per location*

Compli™ Vet is sold as a yearly subscription service

Compli subscriptions cover up to 25 individuals at a singular practice location. Additional user seats may be purchased for \$99/ten trainees



Total Animal Hospital Compliance Made Easy with

Compli™ Vet Plus

Do you need the unlimited training that comes with Compli™ Vet but also need the required OSHA Compliance and Infection Control Manual? Compli™ Vet Plus will help you effortlessly advance compliance proficiency by training your entire team online, while earning valuable CE credit, and includes the required compliance manual in digital form!



Your membership includes:

- OSHA, Infection Control digital compliance manuals
- OSHA required training
- CDC Infection Control required training
- Sexual Harassment training
- Zoonotic Disease prevention training
- Access to exclusive live webinars
- GHS Hazardous Materials Wall Chart
- Required Federal 6-in-1 Labor Law wall chart
- Required GHS Chemical, Biohazard & Radiation labels

Gain access to oversight tools and support:

- Centralized Compliance Dashboard for record-keeping of core areas of compliance
- Compli™ Vet Facility Audit Checklist app
- Regional Manager oversight functions
- Expert compliance support via toll-free phone, email, & chat
- Assistance in responding to OSHA inspections
- Guidance to required & recommended products
- Professional License Vault: Store your state and federal licenses securely, with automated renewal reminders

Compli™ Vet Plus Online Learning Center Yearly Subscription

COM1AHP	1-4 locations	\$995 retail per location*
COM5AHP	5-10 locations	\$895 retail per location*
COM11AHP	11-24 locations	\$850 retail per location*
COM25AHP	25-49 locations	\$799 retail per location*
COM50AHP	50-74 locations	\$749 retail per location*
COM75AHP	75+ locations	\$699 retail per location*

Compli™ Vet is sold as a yearly
subscription service

**Compli subscriptions cover up to 25 individuals at a singular practice location. Additional user seats may be purchased for \$99/ten trainees*

ComplianceTrainingPartners.com/Compli-Vet
Info@ComplianceTrainingPartners.com

ONLINE TRAINING PROGRAMS



OSHA Compliance and Zoonotic Disease Prevention Program Required

This training program has been redesigned and includes required Globally Harmonized System for Hazard Communication (GHS). All employees must receive GHS training. The program also includes training on Zoonotic Disease Prevention and all applicable subparts of the OSHA regulation. It is designed to fulfill OSHA's training requirements and allows all trainees to take a post-training online evaluation and print a certificate of completion.

The System includes:

- Online post test and certificate of training
- Toll-free telephone and online technical support
- This course is approved for 2 RACE CE credits upon completion of training



OSHA/IC CE Certificates



**Certificate of completion and 2
CEU's included with each view.**

VSTR/VP1 OSHA Online Training Program
(1 view, and 1 certificate of completion)

VSTR/VP6 OSHA Online Training Program
(6 views, and 6 certificates of completion)

VSTR/VP10 OSHA Online Training Program
(10 views, and 10 certificates of completion)

*No returns on online training

ONLINE TRAINING PROGRAMS



Sexual Harassment in the Healthcare Workplace

Sexual harassment is a type of workplace discrimination and has become a prominent topic of discussion. It is found in all industries, with the healthcare industry being no exception. All healthcare professionals should understand how to identify and react to workplace sexual harassment.

Following the training, attendees will be able to:

- Define and recognize sexual harassment
- Understand how to address abusive and unlawful harassment/conduct in the workplace
- Recognize various legal remedies available for victims of harassment
- Establish strategies for prevention and response to harassment
- Identify policies and documentation required for compliance
- Understand their role in preventing sexual harassment and that of their supervisors

SH1VD (1 view for 1 person and 1 certificate of completion)

SH6VD (6 views for 6 people and 6 certificates of completion)

SH10VD (10 views for 10 people and 10 certificates of completion)

2 CEU's included with each view.



Fire Safety & Disaster Training

OSHA requires emergency training and evacuation procedures for all offices. This program provides training on these important issues to assure workplace compliance and safety.

FSD/VP 6 views

OSHA COMPLIANCE FOR ANIMAL HEALTH FACILITIES

The comprehensive OSHA Compliance and Infection Control Program covers all aspects of the Occupational Safety and Health Act as well as other pertinent Safety Regulations.

Required

Complete System includes:

- Complete written training manual with required documents
- Hazard Communication and GHS Compliance
- Workplace Violence Program
- Family and Medical Leave Act Compliance
- Sexual Harassment Policy Requirements
- Zoonotic Disease Prevention Plan
- Hazardous Materials Wall Chart
- Federal Labor Law Wall Chart
- Comprehensive online training program for 3 individuals with 2 RACE approved CE credits for each (additional views available for purchase)
- Compliance labeling package
- Implementation instructions
- One year of upgrade service
- Ergonomic Safety
- Animal Handling Protocol
- Safety Programs for:
 - Anesthetic Gases
 - Formaldehyde/Glutaraldehyde
 - Ethylene Oxide
- Toll-free telephone and online technical support
- Assistance with OSHA inspections
- Additional online training views available. See page 8.



VCPE OSHA Compliance System



Special Programs

For offices that have outdated manuals, a **MANUAL ONLY** option is available. It includes the manual with a one (1) or two (2) years of upgrade service. This manual **DOES NOT** include online staff training, wall charts or labels.

VCM1 OSHA Manual/1 yr Upgrade Service

VCM2 OSHA Manual/2 yr Upgrade Service

OSHA COMPLIANCE CHECKLIST

Does your Animal Health facility have what it needs to be in compliance?

Required	Recommended	Product Name	Code
●		OSHA Compliance and Zoonotic Disease Prevention Program	VCPE
●		OSHA Compliance/Zoonotic Disease Prevention Online Training Program	VSTR/VP6
●		OSHA Compliance Labeling Kit	CLK
	●	Anesthetic Gas Monitor	AGM1
●		Biohazard Warning Labels	BWL2
●		Biological Spill Kit	BISK
●		Compliance Labels (Variety Pack)	V180
●		Chemical Spill Kit	CHSK
●		Chemo Spill Kit	KESK
●		Ethylene Oxide Monitor	EOM1
●		Eyewash Inspection Tags	EWIT
●		Eyewash Sign	ESP
●		Emergency Eyewash Station	EES
●		Federal Labor Law Poster	LLP
●		Fire Extinguisher	RFE
	●	Fire Extinguisher Sign	FES
	●	Fire Safety and Disaster Online Training Program	FSD/VP
●		First Aid Safety Kit	FASK
	●	Fluid-Resistant Laundry Bag With Stand	LBC
●		Formaldehyde and Glutaraldehyde Vapor Monitor	FMP1
●		Gloves-Nitrile Utility	NUG1M
●		Glow-In-The-Dark Exit Sign	EXS
●		Laser Safety Eyewear	LPE1
●		Laser Warning Sign	LWS
●		Master Spill Kit	MSK
●		Portable Eyewash Station*	EWP
●		Radiation Caution Labels	RCL
●		Safety Eyewear	FSG
	●	Scalpel Blade Remover	SBR1
	●	Sharps Kaddy-Small	SK1
●		SDS Binder	SDSB
●		Slip-On Side Shields	SS12
●		X-Ray Monitoring Badge	XXMBQ

* For Mobile Facilities

Reach Total In-Office OSHA Compliance with the Compliance Training Partners App!

The Compliance Training Partners Audit app makes achieving compliance in your hospital a breeze! Make use of completed audit reports which contains a wealth of analytical data and compliance resource information:

- ✓ Identify strong and weak areas of compliance in your practice
- ✓ Uncover new ways to improve your overall compliance rating
- ✓ Determine the need for specific compliance merchandise and products
- ✓ Improve your practice by creating a safe, healthy, and compliant workplace

Detailed audit reports are designed to cater to your specific needs, allowing your practice to achieve long term compliance success!



Download the **Compliance Training Partners app** today!

Don't have an account with us yet?

Sign up and create your account-- all within the app.



A woman with brown hair tied back, wearing black-rimmed glasses and white nitrile gloves, is smiling and holding a ginger tabby cat. The background is a blurred indoor setting. The entire image has a blue color overlay.

Spill Kits & Utility Gloves

SPILL KITS



Master Spill Kit

Required

This kit combines all of the Biological, Chemical and Mercury Spill Kit Materials.

The complete kit includes:

- BioSponge® powder
- ChemSponge® powder
- MercSponge® powder
- 1 Mercury magnet
- 1 Mercury scrubber
- 1 Pair reusable nitrile gloves
- 1 Pair safety goggles
- 1 Scooper and pan
- 3 Masks
- 5 Biohazard warning labels
- 3 Red bags for disposal of biological waste
- 3 Black bags for disposal of chemical waste



MSK Master Spill Kit

SPR Scooper & Pan Refill

Mercury Spill Kit

Required

Mercury hazards are eliminated with proper use of this kit. The kit contains MercSponge® powder that amalgamates mercury with a ferrous metal for easy pick up with an included magnet.

The complete kit includes:

- MercSponge® powder
- 1 Mercury magnet
- 1 Mercury scrubber
- 1 Pair reusable nitrile gloves
- 1 Pair safety goggles
- 3 Masks
- 3 Black chemical disposal bags
- 5 Biohazard warning labels



MESK Mercury Spill Kit

MER MercSponge® refill (10oz.)

MSR Mercury Magnet & Scrubber

SPILL KITS



Biological Spill Kit Required

Eliminates the hazards of blood and other body fluids spills. This kit contains BioSponge® powder that solidifies the spill, making clean-up quick and easy.

The complete kit includes:

- BioSponge® powder
- 1 Pair reusable nitrile gloves
- 1 Pair safety goggles
- 1 Scooper and pan
- 3 masks
- 5 Biohazard warning labels
- 3 Red biological waste disposal bags



BISK	Biological Spill Kit
BIOR	BioSponge® refill (8 oz. shaker)

Chemical Spill Kit Required

Designed to handle spills of potentially hazardous liquids (disinfectants, acids, developer, fixer, etc.) This kit includes ChemSponge® powder to easily contain and absorb chemical spills.

The complete kit includes:

- ChemSponge® powder
- 1 Pair safety goggles
- 1 Pair reusable nitrile gloves
- 1 Scooper and pan
- 3 masks
- 5 Biohazard warning labels
- 3 Black chemical disposal bags



CHSK	Chemical Spill Kit
CEMR	ChemSponge® refill (16 oz.)

SPILL KITS



Chemo Spill Kit

Required

This kit contains ChemoSponge® powder to manage chemotherapy medication spills.

The complete kit includes:

- ChemoSponge® powder
- 3 Gowns
- 3 Pairs of shoe covers
- 1 Pair safety goggles
- 3 Pairs of chemo gloves
- 3 Absorbent pads
- 1 Scooper and pan
- 3 disposable N95 respirators
- 3 Yellow chemo disposal bags



KESK	Chemo Spill Kit
CSP	ChemoSponge® refill (8 oz.)

Nitrile Utility Gloves

Required

When cleaning instruments or working with chemicals such as acids or corrosives (disinfectants/solvents/fixer), OSHA regulations require the use of utility gloves. These reusable nitrile gloves will keep your office in compliance. Specify size: available in sizes XS (6) to XL (10). Actual sizes are slightly larger than normal.



NUG1XS	XS 1 pair pack
NUG1S	S 1 pair pack
NUG1M	M 1 pair pack
NUG1L	L 1 pair pack
NUG1XL	XL 1 pair pack
NUG12	12 pair pack

Elbow Length - Available in M or L

NUGE1M	M 1 pair pack
NUGE1L	L 1 pair pack

A photograph of two scientists, a man and a woman, in white lab coats and gloves, examining a white rabbit in a laboratory setting. The man is on the left, looking down at the rabbit, and the woman is on the right, also looking down. The rabbit is lying on a white surface. The background is a blurred laboratory with shelves containing various items. The entire image has a blue tint.

Monitoring Programs

MONITORING PROGRAMS



X-RAY Monitoring Service

Experts agree there is no safe level of radiation and that even the smallest dose may cause cancer or genetic damage. Animal Health facilities may be exposing staff to unsafe levels of radiation. That's why accurately recording radiation exposure is required. The RDC Dosimeter with state-of-the-art Optically Stimulated Luminescence (OSL) technology, has the highest sensitivity available today — 10 times the sensitivity of other technologies!

Features include:

- Fastest reporting in the industry
- A lifetime exposure record is archived for safekeeping
- Protects pregnant workers
- Personalized badges
- Web-based reporting
- Yearly renewal program

XXMBM	Monthly Badge Service
XXMBQ	Quarterly Badge Service
XMBF	Fetal Badge Service (7 months)

*No returns on X-RAY Monitoring badges



To order Radiation Monitoring Badges -
Please call 512-831-7000 ext 1 or
email Sales-sdr-ae@radetco.com

Ethylene Oxide Vapor Monitor Required

The Ethylene Oxide Monitor can be worn as a badge or placed in the breathing zone as an area monitor. Occupational safety standards are based on personal exposure monitoring of each employee who may be exposed to the vapor as a regular part of their job. Periodic monitoring of personal and room concentrations is required.

EOM1	1 Unit
EOM2	2 Units
EOM3	3 Units
EOM4	4 Units

*No returns on Ethylene Oxide Vapor Monitors



MONITORING PROGRAMS



Formaldehyde and Glutaraldehyde Vapor Monitor Required

This Monitor can be used to measure personal exposure or room concentrations of both Formaldehyde and Glutaraldehyde. The monitoring badge will be accepted as accurate in any inspection or dispute because it is validated for accuracy and analyzed in an AIHA accredited laboratory.

Each employee who uses formaldehyde as a regular part of their job must have their exposure monitored periodically, according to OSHA regulations. This Monitor meets OSHA accuracy requirements for both full shift and short-term measurements.

FMP1	1 Unit
FMP2	2 Units
FMP3	3 Units
FMP4	4 Units

*No returns on Formaldehyde and Glutaraldehyde Vapor Monitors



Anesthetic Vapor Monitor

Provides simultaneous measurement of waste anesthetic gases including Sevoflurane, Isoflurane, Enflurane, Halothane, Desflurane and Methoxyflurane. Occupational safety standards are based on personal exposure monitoring of each employee who may be exposed to the vapor as a regular part of their job.

AGM1	1 Unit
AGM2	2 Units
AGM3	3 Units
AGM4	4 Units

*No returns on Anesthetic Vapor Monitors



A female veterinarian wearing a white lab coat and a light-colored hijab is smiling warmly while holding a ginger and white tabby cat. She has a stethoscope around her neck. The background is a clinical setting with shelves of medical supplies. The entire image has a blue color overlay.

Safety/Infection Control Products

SAFETY / INFECTION CONTROL PRODUCTS



SDS Binder Required

OSHA requires you to maintain Safety Data Sheets (SDS) for all hazardous chemicals/materials in your facility. In general, every powder, liquid or cream in your office requires an SDS. This SDS Binder is designed to organize your SDS library in an OSHA compliant manner. It features a durable cover, heavy-duty D-rings, alphabetical tabs, and instructions for organization.

SDS Binder



Contaminated Instrument Kaddy-Small Required

This durable plastic kaddy is specifically designed to carry contaminated sharp instruments between treatment areas and the sterilization area, as required by OSHA. It has a handy attached carrying handle and is affixed with the universal biohazard symbol. Each operatory or treatment room should have a closable container such as this to transport used/contaminated instruments to the sterilization area.

SK1 11¹/₂" x 5" x 4"



Contaminated Instruments Kaddy-Large Required

This sturdy red plastic container is designed to carry up to 3 large instrument cassettes containing contaminated instruments from the operatory to the sterilization/instrument processing area, as required by OSHA. The universal biohazard symbol is prominently placed on the outside of the container.

SK2 17" x 12¹/₂" x 4¹/₂"

Safety Eyewear for Your Patients and Healthcare Team



Providing safety eyewear for your team is required by OSHA. Finally — an affordable, fog-free, OSHA compliant eyewear, designed to provide safety and modern design for the entire healthcare team! These ANSI Z87 approved safety glasses are also the perfect choice to provide protection for your patients, as the standard of care is to provide safety eyewear for all patients.

Eurotech Milan

These high-style, frameless design glasses ensure comfort and protection, while meeting all OSHA and ANSI Z87 requirements for protective eyewear. Available in three unique designer colors, these fog-free glasses are sure to be the most comfortable and stylish safety eyewear you have ever worn!

SPECIFY: Pastel Pink, Lavender Dream, or Mellow Yellow.

FSG	One pair
FSG6	Six pair
FSG10	Ten pair



Pastel Pink



Lavender Dream



Mellow Yellow

Eurotech Honfleur

Offering a comfortable fit and high style, these lightweight, fog-free safety glasses are designed specifically for the healthcare team and their patients!

SPECIFY: Ebony, Ebony With Red, Ebony With Blue

ASG	One pair
ASG6	Six pair
ASG10	Ten pair



Ebony



Ebony With Blue



Ebony With Red



AFC 2 Oz. Spray Bottle

Anti-Fog Protective Eyewear Cleaner

This unique product is designed to effectively clean your safety glasses and face shields, while reducing fogging. Leaving no streaks, it ensures a solution to the fogging problem inherent with wearing masks in healthcare facilities. The product is designed to be compatible with the plastics found in protective eyewear, eliminating the problems associated with other products that etch, soften and discolor them.

SAFETY / INFECTION CONTROL PRODUCTS



Vented Safety Goggles **Required**

These plastic goggles are designed to fit over most personal eyewear. They are vented for free air flow, fog free, and provide protection against spray, splash or projectile injury.

VSG	1 Pair
------------	--------



Side Shields **Required**

These durable side shields slip on to your glasses, providing the protection required by OSHA regulations.

SS1	1 pair pack
------------	-------------

SS12	12 pair pack
-------------	--------------



SAFETY / INFECTION CONTROL PRODUCTS



LaserShields® Protective Eyewear Required

The human eye can be permanently injured from exposure to laser energy. Retinal damage occurs from exposure to 400-1400 nm, while corneal or lens damage occurs from 190 nm-400 nm and 1400-1000 nm. For this reason, OSHA requires the use of laser protective eyewear for all employees exposed to laser energy.

All LaserShields® are made in the USA and come with a lifetime warranty.

LaserShield® Universal

This attractive design provides a universal fit that is comfortable worn alone or over prescription glasses. Available in black only.

LPE1 1 pair



LaserShield® Magnification

For many laser procedures, clinician's desire increased magnification. The LPE 2 features not only an attractive and comfortable design, but is fitted with a 2.5X magnifying insert.

LPE2 1 pair



SAFETY / INFECTION CONTROL PRODUCTS



Choosing an Eyewash

OSHA requires an eyewash to be located “within the work area for emergency use.” ANSI-Z358.1-2004:6.4.2 states “It is the installer’s responsibility to ensure that combination units shall be in accessible locations that require no more than 10 seconds to reach.” Water temperature delivered by emergency equipment should be “tepid”. Tepid is defined to be between 60°F (16°C) and 100°F (38°C).

To accomplish this, you should always purchase an eyewash with an “eliminator valve”, unless you have the eyewash attached to a faucet that is ONLY used for eyewash purposes and the water is pre-adjusted to only allow “tepid” water. Wall mounted models are a good choice when you desire a dedicated eyewash station. Portable eyewashes provide a simple solution if you have a mobile clinic operation.



Aquasafe® Emergency Eyewash Station Required

This unit features an automatic shut-off valve and easily attaches to standard faucets with a removable aerator. This device is designed to meet all OSHA requirements and ANSI standards.

EESE	Emergency Eyewash Station w/Eliminator Valve
-------------	--

EES	Emergency Eyewash Station
------------	---------------------------



Aquasafe® Emergency Eyewash Station Angled Required

This unit features an automatic shut off valve and easily adapts to goose neck faucets with a removable aerator. This unit meets all OSHA requirements and ANSI standards.

EESEA	Emergency Eyewash Station w/Eliminator Valve
--------------	--

EESA	Emergency Eyewash Station Angled
-------------	----------------------------------

SAFETY / INFECTION CONTROL PRODUCTS



Aquasafe® Wall Mounted Eyewash Station

Required

This durable unit is designed to function as a stand-alone unit and must be plumbed to a dedicated water line.

WMEU



Aquasafe® Portable Eyewash Station

Required

Most portable eyewash stations do not comply with OSHA regulations. This quality unit meets all requirements, providing adequate amounts of water to both eyes in the event of an emergency.

EWP



Bacteriostatic Preservative

Bacteriostatic preservative for use in portable eyewash stations. One 8 oz. (148 ml) bottle will preserve up to 20 gallons (18.9 to 75.7 L) of water for up to three months, with a shelf life of 3 years. Four bottles per carton.

PEP

SAFETY / INFECTION CONTROL PRODUCTS



AquaSAFE® Eyewash Sign Required

This large durable plastic sign draws attention to the location of your eyewash station and meets all OSHA requirements for eyewash signage.

ESP 11" x 7"



AquaSAFE® Eyewash Label Required

This adhesive-backed label mounts securely to walls or cabinets, and meets OSHA requirements for eyewash signage.

ESL 3 1/2" x 4"

Sterilization Pouch Stamp and Pad

According to CDC infection control guidelines, sterilization packaging must have, at a minimum, "the date ...and device used, on the outside of the packaging material." This stamp is designed to fulfill these requirements by combining it with non-toxic ink pads that will withstand the heat, pressure and moisture levels of an autoclave or dry heat sterilizer. Assigning only one color per autoclave allows for easy recall of instrument packages in the event of a failed spore test. Five colors of ink are available.

SPP1	1 stamp + 1 black ink pad
SPP2	2 stamps + 1 black ink pad + 1 red ink pad
ICS	Sterilization date stamp
NTPN	Black colored ink pad
NTPR	Red colored ink pad
NTPB	Blue colored ink pad
NTPG	Green colored ink pad
NTPP	Purple colored ink pad



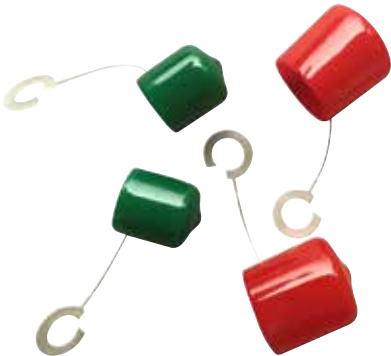
SAFETY / INFECTION CONTROL PRODUCTS



Aquasafe® Eyewash Inspection Tags Required

OSHA regulations state that each eyewash station in your facility must be inspected weekly. These waterproof tags are designed to be attached directly to the eyewash and provide ample space to record your weekly inspections. Includes 5 labels and attachments.

EWIT



Aquasafe® Eyewash Caps

These caps are designed to replace broken or lost caps on the CTP eyewash.

EESAC	Red 1"
EESC	Green 3/4"



Eliminator Valve Adapter

OSHA inspectors have the authority to cite and fine workplaces where the possibility of scalding exists. If your eyewash unit is connected to a sink with both hot & cold running water, you must install a device to regulate the water temperature. This Eliminator Valve complies with OSHA requirements when attached to a conventional eyewash station.

EVA

SAFETY / INFECTION CONTROL PRODUCTS



AquaSafe® Evacuation System Cleaner

A bacterial-based cleaner which is safe for equipment, the environment and staff.

- Bacterial-based cleaner provides residual over-night debris removal from cuspidor drains and suction systems
- Works under all conditions, even in cold water
- Neutral PH, safe for amalgam separators and traps
- Aquasafe® leaves a fresh and clean scent at the traps and throughout the entire evacuation system
- Environmentally friendly 6 non-pathogenic bacteria provides safe and natural cleaning power
- AquaSafe® ensures a level of protection that cannot be matched by other evacuation system cleaners that simply mask odors

Incredibly Economical-256 one-quart treatments per gallon!

AQSE 64 oz. bottle



AquaSafe® Enzymatic Cleaner

Enzymatic Ultrasonic and Instrument Pre-Soak Solution

AquaSafe® Enzymatic Ultrasonic and Instrument Pre-Soak Solution is a highly effective and compliant enzymatic solution. It cleans blood, tissue, mucus, and other debris from instruments, burs, endodontic files, crowns, bridges dentures, partial dentures and orthodontic appliances. The product also allows for full compliance with EPA requirements by having a neutral pH, utilizing enzymatic action rather than harsh chemicals.

AEC 1 Gallon Bottle

SAFETY / INFECTION CONTROL PRODUCTS



Single Handed Needle Recapper

Our needle recapper is designed to minimize risk of accidental needle sticks. The design adapts to any needle type and is useful in every treatment room.

SHR1	1 unit
SHR6	6 units



Scalpel Blade Remover

This “Blade Mate” remover is designed to eliminate scalpel blade cuts. The blades drop safely into the sealed reservoir (stores up to 100 blades). When full, simply drop into your regular sharps container.

SBR1	1 unit
SBR6	6 units
SBR12	12 units



First-Aid Safety Kit Required

This first-aid kit is designed specifically for your employees. All basic first-aid supplies required for workplace compliance are included in this durable kit.

FASK

Disposable Ear Plugs

When noise levels in the workplace reach or exceed 85 decibels for 8 hours or more, a “Hearing Conservation Program” is required by OSHA. These comfortable, latex-free foam ear plugs help meet this requirement.



DEP24	24 pair
--------------	---------

SAFETY / INFECTION CONTROL PRODUCTS



Laundry Bag & Stand Required

It is recommended that “contaminated” laundry be placed in bags that are marked with a Biohazard symbol. This sturdy, washable, fluid-resistant bag features a nylon draw cord, attached handles, and is imprinted with the Biohazard symbol.

LB	Laundry Bag
LBS	*Laundry Bag Stand
LBC	Bag & Stand Combo

*Stand is designed to be used with LB Laundry Bag Only



Infectious Waste Bags Required

These high-quality, sturdy red bags are imprinted with the universal Biohazard symbol making them safe for regulated medical waste disposal in all states. Available in three sizes.

Certified for Florida Disposal Requirements.

IWB4	4 gal. 25 per roll
IWB10	10 gal. 25 per roll
IWB30	30 gal. 20 per roll



Fire Extinguisher - ABC Rated Required

This commercial device is designed for use in areas of up to 3,000 square feet and meets all requirements for any animal health facility. It can be used for paper, gas, wood, flammable liquid or electrical fires.

RFE

A veterinarian, a Black woman with her hair in a bun, is gently examining a small, white, fluffy dog on a white examination table. The scene is set in a clinical office. In the background, there are several laminated wall charts. One chart on the left shows a silhouette of a dog with anatomical labels. Another chart in the center features a grid with colored squares. A computer monitor is also visible in the background. The entire image has a blue color overlay.

Laminated Wall Charts

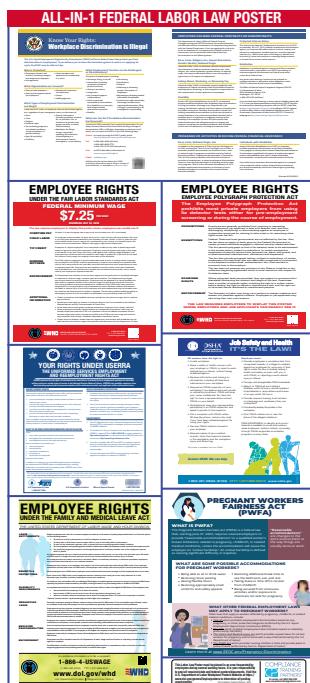
LAMINATED WALL CHARTS



Fire Safety Wall Chart

Once started, a fire doubles in size every 19 seconds. This high-quality laminated poster serves as a reminder for all employees on how to properly respond to a fire in the workplace, as well as proper use of a fire extinguisher. In addition, it serves as proof that fire safety training has been provided in your facility.

FSP 11" x 17"



Labor Law Wall Chart Required

Federal law mandates that the Labor Law Poster must be displayed in the workplace in view of all employees. Employee information notices required are:

- Fair Labor Standard Act/Minimum Wage
- Job Safety and Health: It's the Law
- Family Medical Leave Act
- Equal Employment Opportunity
- Employee Polygraph Protection
- Uniformed Services Employment and Reemployment Rights Act
- Pregnant Workers Fairness Act (PWFA)

This comprehensive all-in-one laminated wall chart includes all required information.

LLP 15" X 31"

LAMINATED WALL CHARTS



GHS Hazardous Materials Wall Chart

This chart complies with the Globally Harmonized System for Hazard Communication and was designed to assist employees in evaluating chemical hazards and identifying protective needs when working with hazardous materials. Chemical and product labels are easily interpreted by use of rating codes and pictorials. Essential for every health facility, this chart is available in two sizes to allow for posting in a variety of places.

GHSWS 9" x 25"

GHSWL 17" x 35"



First Aid Response Wall Chart

This large colorful poster describes proper first aid response in the work place and serves as proof that employees have been provided first aid information. The poster is carefully organized by type of emergency medical situation and will serve as a valuable reference for all employees.

FAR 22" x 26"



USP 800 Compliance Wall Chart

USP 800 is a new federal standard designed to protect all human and animal healthcare workers who handle hazardous drugs. The standard outlines the precautions that must be taken to ensure that these drugs are not ingested, inhaled, absorbed through the skin or introduced through a sharps injury. This colorful laminated poster helps make compliance with USP 800 easily understandable by all staff members and fulfills the requirement that a warning sign be posted in all environments where these drugs are handled.

USPP 13" x 24"

A photograph of a female veterinarian and a male veterinary assistant in a clinical setting. The veterinarian, on the left, is a woman with blonde hair, wearing a white lab coat and a stethoscope, smiling while holding a ginger tabby cat. The assistant, on the right, is a man with glasses and a beard, wearing white scrubs and gloves, smiling and holding a tablet. In the background, a poster titled "Support of the Dog" with a dog silhouette is visible. The entire image has a blue color overlay.

Labels & Signs

LABELS & SIGNS



Standard Precautions

Designed to protect you and your employees, these bright, adhesive backed labels should be displayed in all treatment areas. They will reinforce the most important part of your exposure control plan.

UPL 5 1/2" x 8" 5 pack



STOP! Wash Hands

These adhesive-backed labels should be displayed throughout your office. Attractive Black/Red/White design.

SWHL 5 1/2" x 8" 5 pack



Handwashing Technique

These adhesive-backed labels should be displayed throughout your office. Attractive Black/Red/White design.

HWTL 2 3/4" x 4" 5 pack



Handwashing Technique (English/Spanish)

The Centers for Disease Control states that handwashing is one of the best ways to prevent the spread of disease. These bilingual labels will serve as a reminder to all staff members of the importance of handwashing.

HWTL-B 6" x 6" 2 pack



LABELS & SIGNS



Variety Pack of Infection Control Labels

Our five most popular infection control labels are included in this pack. These labels are adhesive-backed, durable and water resistant.

VPL5 5 pack



OSHA Compliance Labeling Kit

Various sized biohazard and radiation caution labels are combined with a hazardous materials wall chart and labeling instructions to assist your office in meeting OSHA requirements for labeling. Toll-free telephone and online technical support included.

- **1** 9" x 25" GHS Hazardous Materials Wall Chart
- **40** 2.5" x 2.5" GHS labels
- **8** 4" x 4" GHS labels
- **20** 2" x 2" Biohazard labels
- **10** 4" x 4" Biohazard labels
- **5** 1.5" x 4" Radiation labels

CLK



Variety Pack of Labels

The variety pack offers various sizes of our chemical, biohazard and radiation labels. This packet contains over 80 of our most popular labels at a great value price.

- **40** 2.5" x 2.5" GHS labels
- **8** 4" x 4" GHS labels
- **20** 2" x 2" Biohazard labels
- **10** 4" x 4" Biohazard labels
- **5** 1.5" x 4" Radiation labels

V180

LABELS & SIGNS



GHS Chemical Product Labels Required

These water resistant GHS chemical labels are color coded and allow for compliance with the Globally Harmonized System for Hazard Communication.

GHSC	2 1/2" x 2 1/2" Labels 25 pack
GHSC100	2 1/2" x 2 1/2" Labels 100 pack
GHCL	4" x 4" Labels 25 pack
GHCL100	4" x 4" Labels 100 pack

Radiation Caution Labels

All radiographic equipment must be identified with this label.



RCL	1 1/2" x 4" Labels 5 pack
------------	------------------------------

LABELS & SIGNS



Biohazard Warning Labels Required

Must be placed on biohazardous materials.



BWL2	2" x 2" Labels 25 pack
BWL21	2" x 2" Labels 100 pack
BWL4	4" x 4" Labels 25 pack
BWL41	4" x 4" Labels 100 pack
BWL4W	4" x 4" Labels (waterproof) 25 pack



Biohazard Storage

These magnetic labels allow designation of refrigerators for biohazard (red) or food (green) storage. Specify red or green.

BSLM 4" x 4"



These adhesive labels are perfect for placement on cupboard doors, refrigerators or freezers that contain potential biohazards.

BSLA 4^{1/2}" x 4^{1/2}" 5 pack

LABELS & SIGNS



Emergency Signs - Glow-In-The-Dark

Required

OSHA requires that all “emergency exits,” “exits,” and “non-exits” be marked with clear, visible, illuminated signs. These light weight signs glow in the dark for up to 8 hours. All signs meet OSHA & NFPA requirements.

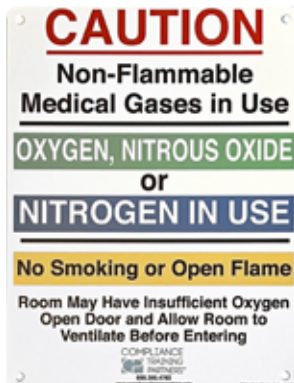


EOS	10" X 7" 'Emergency Exit Only'
------------	-----------------------------------

EXS	10" X 7" 'Exit'
------------	-----------------

NXS	10" X 7" 'Not an Exit'
------------	------------------------

FES	4" X 18" 'Fire Extinguisher'
------------	---------------------------------



Medical Gas Warning Sign

Required

According to established guidelines, you must have a proper medical gas warning sign in the area where your nitrous oxide, nitrogen or oxygen tanks are stored. This durable plastic sign has pre-drilled mounting holes and will allow you to be in full compliance.

MGWS	10" X 7"
-------------	----------

LABELS & SIGNS



Laser Warning Sign

Many offices utilize a laser for various surgical procedures. It is required that you place a “laser in use” warning sign in each room that the device is operated in. This durable acrylic sign meets all requirements.

LWS 10" X 7"



Caution Radiation Sign

A sign indicating the use of x-rays should be placed in areas of possible exposure. This plastic sign comes pre-drilled with mounting holes and will assist you in complying with your states radiographic regulations.

CRS 10" x 7"



Noise Warning Sign

Kennel areas often exceed OSHA's limitations on noise exposure. Post this durable sign in high noise areas like kennels to protect your employees.

NWS 10" x 7"

LABELS & SIGNS



Hazardous Drug Sign and Labels

USP 800 regulations require that a warning sign be posted in all areas where employees work with hazardous drugs such as those used in chemotherapy. This durable plastic sign meets all requirements under the regulation and comes with pre-drilled mounting holes. Because individual drawers and cabinets containing hazardous drugs must also be labeled, 10 adhesive backed labels are included.

HDSL	Includes one sign (9" x 11") and 10 labels (1.5" x 4")
-------------	--



Hazardous Drug Warning Labels

USP 800 regulations require that cabinets and drawers containing hazardous drugs such as those used in chemotherapy be properly labeled. These adhesive-backed labels meet all requirements of the regulation.

HDL	Includes ten adhesive backed labels (1.5" x 4")
------------	---

A photograph of a female veterinarian with blonde hair tied back, wearing blue scrubs and a stethoscope. She is smiling and gently holding the neck of a golden retriever. The dog is sitting and looking towards the camera. The entire image has a blue tint.

FAQs and Checklists

FAQ



What is the best way to bring our office into compliance?

The comprehensive CTP OSHA Compliance Program is simple to follow and covers all aspects of the OSHA law. For Multi-site and corporate hospitals, inquire about Compli Vet Plus for total compliance.

We have implemented the CTP Compliance Program in our office. What other training programs are available?

CTP offers a variety of online training programs addressing such issues as annual OSHA staff training, infection control protocol, waste disposal and recordkeeping requirements. We have also expended our education curriculum to include Sexual Harassment courses.

Where do we find safety products that meet OSHA requirements?

CTP offers a full line of safety products which will allow you to comply with OSHA regulations. These include: eyewash stations, spill kits, fire extinguishers, safety glasses, chemical handling gloves, signs, and various monitoring badges. All products are available on our website, ComplianceTrainingPartners.com

What about infection control products?

We strive to bring you the best infection control products so that you can provide the safest environment possible for your patients and staff. All products are available on our website, ComplianceTrainingPartners.com

What do we do when OSHA regulations change?

At CTP, we constantly monitor OSHA and other pertinent safety regulations. We strongly recommend our upgrade subscription service, or Compli Vet Plus, which will keep you informed of any changes or additions to these regulations.

What is your return policy?

If a product does not meet your needs, simply call within 30 days for a return authorization number. This number must be clearly written on the outside of the return box. Shipping and handling charges are not refundable, and a restocking fee may apply. Training materials are not returnable if opened.

HOW TO ORDER



To order, visit our website at
ComplianceTrainingPartners.com
or contact Compliance Training
Partners by phone **888.388.4782**

Delivery Terms:

All orders are subject to a shipping and handling charge. Orders are shipped UPS ground.

Price Policy:

While every effort has been made to provide you with the lowest possible prices, occasionally unanticipated manufacturer increases make it necessary to change the prices listed in this catalog. We regret that price increases may sometimes occur.

Back-orders:

Occasionally because of increased demand or vendor delays, it is necessary to back-order an item. You will be notified of any such delays along with an anticipated ship date.

Returns and Exchanges:

Please inspect your shipment upon arrival. If you need to return an item, please call our Customer Service representative to obtain a return authorization number. Returned products must have been purchased within the previous 30 days and a 15% restocking fee will be applied. We ask that all goods be in resalable condition to receive full credit. *Some products are non-refundable, see product description for details.

Mailing Address:

1919 Federal Blvd, Ann Arbor, MI 48103

OSHA COMPLIANCE

AUDIT CHECKLIST FOR ANIMAL HEALTHCARE FACILITIES

Y | N

TRAINING

- ☐ ☐ Are employees provided training on all applicable OSHA regulations?
- ☐ ☐ Are new employees provided training before performing duties?
- ☐ ☐ Are training records kept for a minimum of 5 years?
- ☐ ☐ Are all safety practices and procedures updated annually?
- ☐ ☐ Have employees using radiographic equipment been properly trained?
- ☐ ☐ Have you appointed someone in the hospital to be in charge of OSHA compliance?

HAZARD COMMUNICATION

- ☐ ☐ Is a written hazard communication program customized, reviewed and updated annually?
- ☐ ☐ Are SDS sheets on file?
- ☐ ☐ Has a chemical inventory list containing all hazardous materials been created?
- ☐ ☐ Are all hazardous products labeled properly?
- ☐ ☐ Do all employees understand emergency spill procedures?
- ☐ ☐ Is there a spill kit available?
- ☐ ☐ Do all employees know how to use the eyewash station?
- ☐ ☐ Is the eyewash station labeled and functioning properly?

ZOONOTIC DISEASE PREVENTION

- ☐ ☐ Are waste containers in treatment areas labeled with the biohazard label?
- ☐ ☐ Does a written exposure control plan exist and is it accessible to all employees?
- ☐ ☐ Is the plan reviewed and updated at least annually?
- ☐ ☐ Is handwashing performed before and after treating patients?

CYTOTOXIC DRUGS/CHEMOTHERAPY

- ☐ ☐ Is a biological safety cabinet (BSC) used for drug preparation?
- ☐ ☐ Is proper PPE available including, double chemo gloves, disposable chemo gown and safety eyewear?
- ☐ ☐ Is a chemo spill kit available?
- ☐ ☐ Do only authorized/trained staff treat chemo patients?
- ☐ ☐ Are patients isolated and a special cage card used?
- ☐ ☐ Are excretions from cytotoxic drug patients disposed of properly?
- ☐ ☐ Is chemo waste disposed of using yellow colored chemo specific containers and picked up by an approved hauler?

GENERAL HOUSEKEEPING, STORAGE, WALKING SURFACES, MEANS OF EGRESS

- ☐ ☐ Are all areas of the office clean, uncluttered, and sanitary?
- ☐ ☐ Are all passageways and aisles free from obstruction?
- ☐ ☐ Are lighted or glow in the dark exit signs in place?
- ☐ ☐ Are there at least 2 means of egress (exits)?
- ☐ ☐ Are employees' food and beverages kept in a designated refrigerator, separate from clinical supplies?
- ☐ ☐ Does the office have proper ventilation and air quality control (HVAC fan on during working hours, filters changed regularly)?
- ☐ ☐ Are electrical and medical gas closets free from any stored items?

ELECTRICAL

- ☐ ☐ Are all the electrical devices properly grounded (3 prong plug)?
- ☐ ☐ Are all electrical outlets that are near water (e.g. bathrooms, kitchens) on a Ground Fault Interrupter (GFI) circuit?
- ☐ ☐ Have you checked that extension cords are not in use?
- ☐ ☐ Are all cords and plugs free of visible wear?

FIRE

- ☐ ☐ Is a fire extinguisher available for use?
- ☐ ☐ Is the extinguisher being inspected monthly and the inspection being documented?
- ☐ ☐ Is it being inspected for leaks, expiration date, and adequate pressure?

COMPRESSED GASES

- ☐ ☐ Are the gas cylinders properly secured to prevent tipping?
- ☐ ☐ Are gas cylinders properly labeled?
- ☐ ☐ Are employees trained on compressed gas safety?

MEDICAL EMERGENCIES, SAFETY & FIRST AID

- ☐ ☐ Do all staff members know the proper post exposure procedures?
- ☐ ☐ Is there an accident report file established and maintained?
- ☐ ☐ Are monthly inspections of the facility being conducted, including the first aid kit and fire extinguisher?
- ☐ ☐ Is there an eyewash station within 25 feet or 10 seconds of hazardous chemicals?
- ☐ ☐ Is the eyewash station being inspected and tested weekly?
- ☐ ☐ Is a fire extinguisher available?
- ☐ ☐ Have employees been trained on proper use of the fire extinguisher?
- ☐ ☐ Do stairs have a handrail with adequate headroom and lighting?

EMPLOYEE FILES / RECORD KEEPING

- ☐ ☐ Do employee files contain medical reports of workplace accidents and injuries?
- ☐ ☐ If vaccination is required, has a copy been placed in the employee medical record?

- ☐ ☐ If an accident occurred in the workplace, has OSHA form 301 been completed and a copy placed in the employee record?
- ☐ ☐ If an accident occurred and form 301 was filled out, was this information transferred to OSHA form 300?

PERSONAL PROTECTIVE EQUIPMENT (PPE)

- ☐ ☐ Is proper personal protective equipment provided and maintained by the employer?
- ☐ ☐ Are employees trained to put on and remove PPE?
- ☐ ☐ Do employees understand the limitations of PPE?
- ☐ ☐ Is protective eyewear worn during all procedures and when handling chemicals?
- ☐ ☐ Are long sleeve lab coats and/or gowns worn and changed when visibly soiled and at the end of the day?
- ☐ ☐ Are nitrile or synthetic gloves provided to those who have sensitivity to latex?
- ☐ ☐ If lasers are used, is laser protective eyewear worn?
- ☐ ☐ Is hearing protection provided in high noise areas where levels exceed 85 decibels over an 8-hour time weighted average?

POSTERS, FORMS AND SIGNS PROPERLY DISPLAYED

- ☐ ☐ Is the Federal Minimum Wage poster displayed?
- ☐ ☐ Is the Federal OSHA 3165 poster, or state OSHA poster (if required) displayed?
- ☐ ☐ Is the OSHA form 300A available?
- ☐ ☐ Is the Pregnant Workers Fairness Act poster displayed
- ☐ ☐ Is the Equal Opportunity Employer poster displayed?
- ☐ ☐ Is the Family Medical Leave Act poster displayed (50 or more employees)?
- ☐ ☐ Is the Employee Polygraph Protection Act poster displayed?
- ☐ ☐ Is the Uniformed Service Employment and Reemployment Rights Act poster displayed?
- ☐ ☐ Are state specific posters displayed where required?
- ☐ ☐ Is there an emergency evacuation plan in place?
- ☐ ☐ Is a housekeeping schedule posted?
- ☐ ☐ If lasers are used, is a warning sign posted?
- ☐ ☐ If X-Rays are used, is a warning sign posted?

LAUNDRY

- ☐ ☐ Is protective clothing soiled by a human disease causing pathogens, placed in a bag labeled with the biohazard symbol and either laundered in-house or by a professional service?

SHARPS

- ☐ ☐ Is there a sharps log available for documenting exposure incidents?
- ☐ ☐ Are sharps containers readily accessible in the area of use?
- ☐ ☐ Are filled containers transported by a licensed regulated biohazardous waste hauler?
- ☐ ☐ Are filled sharps containers picked up at the time interval mandated by your state?

- ☐ ☐ Are employees using a single-handed needle recapping technique or are engineering controls (mechanical devices) being used to assist them in recapping?
- ☐ ☐ Are scalpel blade removers or disposable one piece scalpel blade/handles being used?

NON-SHARP REGULATED WASTE

- ☐ ☐ Are carcasses, body parts, bedding, and related waste from infected animals or animals that were in isolation disposed of according to state regulations?

MONITORING

- ☐ ☐ Are exposed employees wearing radiation dosimeters?
- ☐ ☐ If the office is using ethylene oxide, formaldehyde/formalin or halogenated anesthetic gases, is air monitoring being conducted as required?

DISCLAIMER OF WARRANTY

The employer is ultimately responsible for safety and compliance in their workplace and familiarity with all rules, laws and regulations that may apply. Compliance Training Partners, L.L.C. as well as its agents, dealers and distributors cannot be held responsible for any legal actions, citations, penalties or fines that may result from failure to comply COMPLIANCE TRAINING PARTNERS, LLC AS WELL AS ITS AGENTS, DEALERS AND DISTRIBUTORS HEREBY DISCLAIMS ANY AND ALL REPRESENTATIONS, CONDITIONS AND WARRANTIES, WHETHER EXPRESS OR IMPLIED, ORAL OR WRITTEN, STATUTORY OR OTHERWISE, INCLUDING WITHOUT LIMITATION THE IMPLIED WARRANTIES OR CONDITIONS OF MERCHANTABILITY OR FITNESS FOR THE PURPOSE. At no time shall COMPLIANCE TRAINING PARTNERS, LLC, ITS AGENTS, DEALERS OR DISTRIBUTORS, be responsible for consequential, incidental or special damages, whether for loss of profits or otherwise, or for damages for fundamental breach of contract or breach of a fundamental term. COMPLIANCE TRAINING PARTNERS, LLC'S AND ITS AGENTS, DEALERS AND DISTRIBUTORS obligation to Buyer for defective services is limited to a refund of fees actually received from Buyer. At no time shall COMPLIANCE TRAINING PARTNERS, LLC'S, AND ITS AGENTS, DEALERS AND DISTRIBUTORS liability for any service provided by and supplied by it exceed the purchase price of such service. Warranty claims shall be made upon occurrence. COMPLIANCE TRAINING PARTNERS, LLC AND ITS AGENTS, DEALERS AND DISTRIBUTORS shall have no liability and no warranty of any kind for any failure or breakdown of a service not provided or controlled by it and unless it is fully paid for the services. COMPLIANCE TRAINING PARTNERS, LLC AND ITS AGENTS, DEALERS AND DISTRIBUTORS shall have no liability and no warranty of any kind for any service used for any purpose which CTP did not fully supervise, participate and/or complete. Please see our website, www.ComplianceTrainingPartners.com for full disclaimer.

NOTES

[illegible]



Hazard Communication Standard Labels

OSHA has updated the requirements for labeling of hazardous chemicals under its Hazard Communication Standard (HCS). All labels are required to have pictograms, a signal word, hazard and precautionary statements, the product identifier, and supplier identification. A sample revised HCS label, identifying the required label elements, is shown on the right. Supplemental information can also be provided on the label as needed.



U.S. Department of Labor



**Occupational
Safety and Health
Administration**

www.osha.gov (800) 321-OSHA (6742)

For more information:

SAMPLE LABEL	
CODE _____ Product Name _____	Product Identifier
Company Name _____ Street Address _____ City _____ State _____ Postal Code _____ Country _____ Emergency Phone Number _____	Supplier Identification
Keep container tightly closed. Store in a cool, well-ventilated place that is locked. Keep away from heat/sparks/open flame. No smoking. Only use non-sparking tools. Use explosion-proof electrical equipment. Take precautionary measures against static discharge. Ground and bond container and receiving equipment. Do not breathe vapors. Wear protective gloves. Do not eat, drink or smoke when using this product. Wash hands thoroughly after handling. Dispose of in accordance with local, regional, national, international regulations as specified.	Precautionary Statements
In Case of Fire: use dry chemical (BC) or Carbon Dioxide (CO ₂) fire extinguisher to extinguish. First Aid If exposed call Poison Center. If on skin (or hair): Take off immediately any contaminated clothing. Rinse skin with water.	Hazard Pictograms Signal Word Danger Hazard Statements Highly flammable liquid and vapor. May cause liver and kidney damage.
Supplemental Information Directions for Use _____ _____ _____ Fill weight: _____ Lot Number: _____ Gross weight: _____ Fill Date: _____ Expiration Date: _____	





Etiquetas Estándar para la Comunicación de Peligro

De acuerdo con su Norma de Comunicación de Peligro (HCS), la OSHA ha actualizado los requisitos para las etiquetas de los productos químicos peligrosos. Todas las etiquetas se requieren incluir pictogramas, una palabra de advertencia, indicaciones de peligro, consejos de prudencia, identificación del producto y la identificación del proveedor. A la derecha se presenta la muestra de una etiqueta modificada de acuerdo con la HCS, que indica los elementos obligatorios. La etiqueta puede contener también información suplementaria según sea necesario.

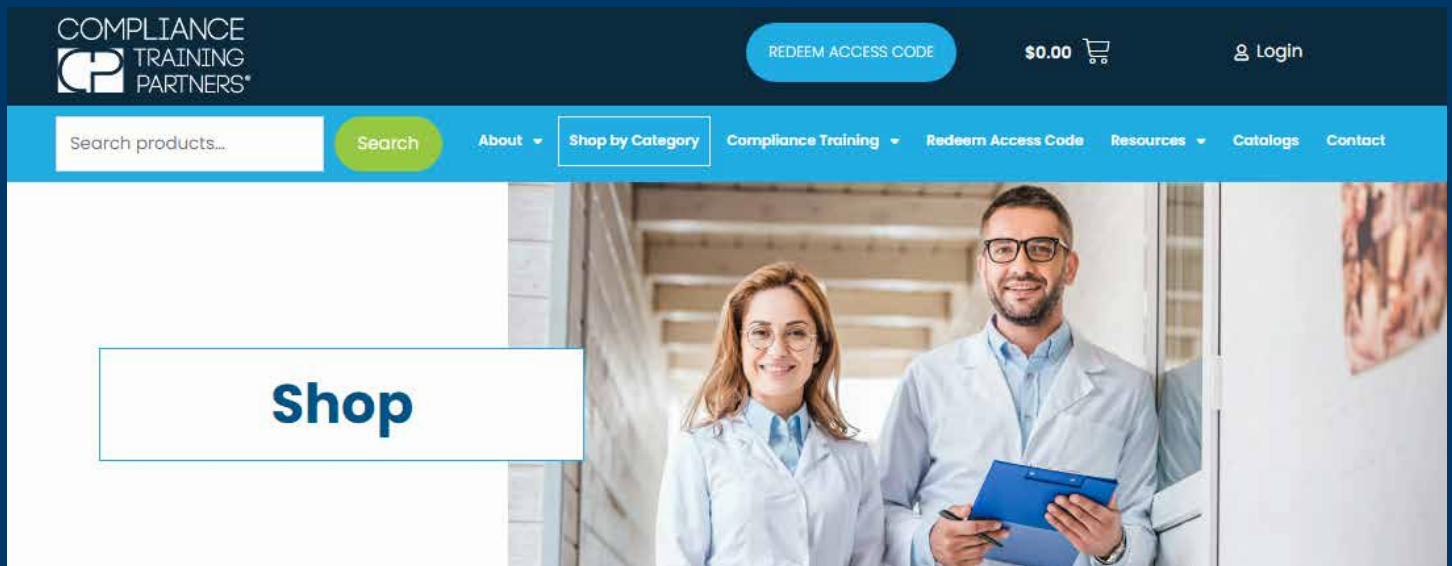


Departamento de Trabajo
de los EE. UU.

Para más información:
OSHA® Administración de
Seguridad y Salud
Ocupacional
www.osha.gov (800) 321-OSHA (6742)

ETIQUETA DE MUESTRA	
CÓDIGO Nombre del producto	Identificación del producto
Nombre de la empresa Dirección Ciudad Estado Código postal País Número de teléfono de emergencia	Identificación del proveedor
<p>Mantener el contenedor herméticamente cerrado. Almacenar en un lugar fresco, bien ventilado y cerrado bajo llave. Mantener alejado de fuentes de calor, chispas o llama abierta. No fumar. Usar sólo con herramientas que no generen chispas. Usar equipo eléctrico a prueba de explosiones. Tomar medidas de precaución contra descargas estáticas. Fijar y conectar a tierra el equipo contenedor y receptor. No respirar los vapores. Usar guantes protectores. Abstenerse de comer, beber o fumar cuando se usa este producto. Lavarse muy bien las manos después de manejar este producto. Desechar el producto según las especificaciones y los reglamentos locales, regionales, nacionales e internacionales.</p>	
<p>En caso de incendio: usar un extintor de polvo químico (tipo BC) o de dióxido de carbono (CO₂).</p>	
<p>Primeros auxilios Si hay exposición a este producto, llamar al Centro de Control de Intoxicaciones. En caso de contacto con la piel o el cabello: quitar de inmediato toda la ropa contaminada. Lavar la piel con agua.</p>	
<p>Pictogramas de peligro</p> <div style="display: flex; justify-content: space-around;">   </div>	
<p>Palabra de advertencia Peligro</p>	
<p>Indicaciones de peligro</p> <p>Líquido y vapores muy inflamables. Puede provocar daños al hígado y los riñones.</p>	
<p>Consejos de prudencia</p>	
<p>Información suplementaria</p> <p>Instrucciones de uso</p> <p>Peso lleno: _____ Número de lote: _____ Peso bruto: _____ Fecha de llenado: _____ Fecha de caducidad: _____</p>	

TO ORDER visit
ComplianceTrainingPartners.com/Shop/



ComplianceTrainingPartners.com

P. 888.388.4782

1919 Federal Blvd, Ann Arbor, MI 48103



ComplianceTrainingPartners.com
P. 888.388.4782

Version 4.11.25