



OSHA, HIPAA, & INFECTION CONTROL COMPLIANCE TRAINING

Safety and Infection
Control Products



TO ORDER visit
ComplianceTrainingPartners.com
P. 888.388.4782



ComplianceTrainingPartners.com

P. 888.388.4782

1919 Federal Blvd, Ann Arbor, MI 48103

TO ORDER visit ComplianceTrainingPartners.com/Shop/

Search products...

Search

About

Shop by Category

Compliance Training

Redeem Access Code

Resources

Catalogs

Contact

Shop

Top Sellers



Nitrous Oxide Monitor

\$92.50 - \$299.95



Mercury Spill Kit

\$93.99



MercSponge Spill Powder Refill (12 oz)

\$48.99



X-Ray Monitoring Badge

\$80.99 - \$164.95



Water Test Kit

\$24.95 - \$372.95

TABLE OF CONTENTS



6 - 10	Compliance Manuals And Documents	OSHA Compliance Checklist OSHA Compliance and Infection Control Program - Dental and Medical HIPAA Compliance Program OSHA and HIPAA Manuals & Upgrades
11 - 13	Laminated Wall Charts	GHS Wall Chart Bloodborne Compliance Wall Chart HIPAA Compliance Wall Chart Wall Chart Combo Labor Law Wall Chart Fire Safety Wall Chart First Aid Response Wall Chart
14 - 21	Labels / Signs	Biohazard Warning Labels Radiation Caution Labels GHS Chemical Product Labels Waterproof Labels OSHA Compliance Label Kit Variety Pack of Labels Standard Precautions Stop! Wash Hands Handwashing Technique (English/Spanish) Laser Warning Sign Medical Gas Warning Sign Cough Etiquette Sign Emergency Signs - Glow - In - The - Dark Caution Radiation Sign Biohazard Storage "Allergic To" Labels Medical Alert Labels Variety Pack of Infection Control Labels HIPAA Alert Labels HIPAA Patient Consent Forms
22 - 25	Spill Kits & Utility Gloves	Master Spill Kit Mercury Spill Kit Biological Spill Kit Chemical Spill Kit Chemo Spill Kit Nitrile Utility Gloves
26-39	Online Training Programs	Compli™ and Compli™ Plus OSHA and Infection Control Made Easy Online Training Program HIPAA Compliance Made Easy Online Training Program

		<ul style="list-style-type: none"> Implicit Bias in Healthcare Sexual Harassment in the Healthcare Workplace Human Trafficking, Child Abuse and Neglect Awareness for Healthcare Professionals Fire Safety & Disaster Training Pain Management: The Responsibilities and Requirements of Prescribing Schedule II Opioids
40-43	Monitoring Programs	<ul style="list-style-type: none"> Aquasafe® Dental Unit Waterline Testing System X-Ray Monitoring Service Nitrous Oxide Monitor Formaldehyde/Glutaraldehyde Vapor Monitor Ethylene Oxide Vapor Monitor Anesthetic Vapor Monitor
44	Services	<ul style="list-style-type: none"> Dispose Alloy™ Amalgam Recycling Program Tooth Disposal System
45-57	Safety/Infection Control Products	<ul style="list-style-type: none"> SDS Binder Contaminated Instrument Kaddy-Small & Large Safety Glasses Side Shields Safety Goggles Ear Plugs Lasershields® Protective Eyewear Aquasafe® Emergency Eyewash Station Aquasafe® Emergency Eyewash Station Angled Aquasafe® Wall Mounted Eyewash Station Aquasafe® Portable Eyewash Station Bacteriostatic Preservative Aquasafe® Eyewash Caps Aquasafe® Eyewash Signs & Labels Aquasafe® Eyewash Inspection Tags Aquasafe® Eliminator Valve Adapter CPR Pocket Microshield Single Handed Needle Recapper Scalpel Blade Remover Lab Case Disinfection Labels Sterilization Pouch Stamp & Pad First-Aid Safety Kit Laundry Bag & Stand Aquasafe® Evacuation System Cleaner AquaSafe® Enzymatic Cleaner Fire Extinguisher Fire Extinguisher Inspection Tags Infectious Waste Bags
60-85	General Information	<ul style="list-style-type: none"> Frequently Asked Questions Ordering Information Audit Checklists

COMPLIANCE CHECKLIST

Does Your Healthcare Facility Have What it Needs to be in Compliance?

Required	Recommended	Product Name	Code
●		OSHA Compliance/Infection Control Program-Dental	DCPE
●		OSHA Compliance/Infection Control Program-Medical	MCPE
●		HIPAA Compliance Program-Dental	HIP
●		HIPAA Compliance Program-Medical	HIPM
●		OSHA/Infection Control Annual Online Training Program-Dental	STR/VP6D
●		OSHA/Infection Control Annual Online Training Medical	STR/VP6M
●		Biohazard Warning Labels	BWL2
	●	Bloodborne Pathogen Poster	BCWC
●		Compliance Labeling Kit	CLK
●		Cough Etiquette Sign	CEPS
●		CPR Microshield	CPM
	●	Dental Unit Waterline Testing System	WTK-A
●		Dispose-Alloy™ Amalgam Recycling Program	ARPL
●		Eyewash Inspection Tags	EWIT
●		Eyewash Sign	ESP
●		Emergency Eyewash Station	EESE
●		Federal Labor Law Poster	LLP
●		Fire Extinguisher	RFE
●		Fire Extinguisher Sign	FES
	●	Fire Safety and Disaster Online Training Program	FSD/VP
●		First Aid Kit	FASK
●		Fluid Resistant Laundry Bag with Stand	LBC
●		Formaldehyde and Glutaraldehyde Vapor Monitor	FMP1
●		Gloves-Nitrile Utility	NUG1M
●		Glow-In-The-Dark Exit Sign	EXS
●		Lab Case Disinfectant Labels	LCD100
●		Laser Safety Eyewear	LPE1
●		Master Spill Kit	MSK
●		Medical Gas Warning Sign	MGWS
	●	Needle Recapper (Single-Handed)	SHR1
	●	Nitrous Oxide Monitor	NOM1
●		Portable Eyewash Station**	EWP
●		Radiation Caution Labels	RCL
●		Safety Eyewear	FSG
	●	Scalpel Blade Remover	SBR1
	●	SDS Binder	SDSB
●		Sharps Kaddy-Small	SK1
●		Slip-On Side Shields	SS12
●		Sterilization Pouch Stamp and Pad	SPP1
●		Tooth Disposal System	TDS
●		X-Ray Monitoring Badge*	XXMBQ

*X-Ray Monitoring is required in some states, but recommended in all.

** For Mobile Units

COMPLIANCE PROGRAMS

OSHA Compliance and Infection Control Program Required



The comprehensive OSHA Compliance and Infection Control Program covers all aspects of the Occupational Safety and Health Act as well as the CDC Infection Control Guidelines.

Complete Program includes:

- Complete written training manual with all required documents and written policies are auto-populated with the name of your practice or business
- Complete Infection Control Program as outlined by the CDC
- Required written Exposure Control Plan
- Required written Hazard Communication Plan
- TB Compliance Program
- Workplace Violence Program
- Family and Medical Leave Act Compliance
- Sexual Harassment Policy requirements
- Comprehensive online training program for 3 individuals (additional views available for purchase)
- 3 Continuing Education Units each for 3 individuals after exam completion (Dental Clients Only)
- Assistance with OSHA Inspections
- Toll-Free telephone and online technical support
- GHS Hazardous materials wall chart
- Required Federal Labor Law wall chart
- Upgrade Service (1 year)
- Required product labels which includes:
 - **40** 2.5" x 2.5" GHS labels
 - **8** 4" x 4" GHS labels
 - **20** 2" x 2" Biohazard labels
 - **10** 4" x 4" Biohazard labels
 - **5** 1.5" x 4" Radiation labels
- Additional online training views available.
See pages 24-26.



MCPE	Medical	\$499
MCPE-S	Medical Spanish	
DCPE	Dental	\$499
DCPE-S	Dental Spanish	

Certified Safety Compliance Administrator Program

Empower Your Office in Healthcare Compliance



Why Choose Compliance Training Partner's Certified Safety Compliance Administrator Program?

Lead your team to compliance excellence.

Certification:

- Receive a recognized annual certification

In-Depth Training:

- Comprehensive knowledge of OSHA, Infection Control & HIPAA compliance.

Audit Tools:

- Access and training on compliance audit checklists app for self-assessment.

Access Training*:

- Compli Platform: Utilize our state-of-the-art online training platform for ongoing learning.
- In Office Workbooks: Order workbooks for Certified Safety Compliance Administrator conducted group learning through your dedicated account manager.

FAQ Support:

- Immediate access to Frequently Asked Questions for quick problem-solving.

Dedicated Account Manager:

- Personalized support for all compliance-related inquiries.

*Additional team member training fees apply.



Compliance Club:
Enjoy a **5% discount**
on all products.

How to Become a Certified Safety Compliance Administrator:



Register:

Simple online registration process - \$79.



Complete Training:

Engage in a 1-hour online training session.



Access Certification:

Obtain your certificate upon completion.

Join the Compliance Club:

Exclusive benefits, ongoing support, and a community of certified leaders.

Register Now:



[ComplianceTrainingPartners.com/
Dental-Medical-CSC](https://ComplianceTrainingPartners.com/Dental-Medical-CSC)

To order, please visit ComplianceTrainingPartners.com

HIPAA Compliance Program Required



The Health Insurance Portability and Accountability Act (HIPAA) requires that all healthcare providers adhere to a specific set of security and privacy standards. The CTP HIPAA Compliance Program provides everything your office needs to meet these requirements:

Complete Program includes:

- A comprehensive compliance manual
- All required documents and written policies are auto-populated with the name of your practice or business
- Required Notice of Privacy Practices
- HIPAA consent forms
- Comprehensive online training program for 3 individuals (additional views available for purchase)
- 2 Continuing Education Units each for 3 individuals after exam completion (Dental Clients Only)
- Assistance with HIPAA Inspections
- Toll-Free telephone and online technical support
- Laminated wall chart of regulations
- **4** 4" x 6" Compliance warning labels with re-usable cling back
- Upgrade Service (1 year)
- Additional online training views available. See pages 24-26.



HIP	HIPAA Compliance System (Dental)	\$469.95
HIP-M	HIPAA Compliance System (Medical)	\$469.95
HIP-S	HIPAA Compliance System (Dental) Spanish	\$469.95
HIP-MS	HIPAA Compliance System (Medical) Spanish	\$469.95

OSHA & HIPAA Special Manuals Required



For offices that have outdated manuals, these manuals include a one (1) or two (2) years of upgrade service. DOES NOT include online staff training, wall charts or labels.



DCM1	Dental OSHA Manual/ 1 yr Upgrade Service	\$299.50
MCM1	Medical OSHA Manual/ 1 yr Upgrade Service	\$299.50
DCM2	Dental OSHA Manual/ 2 yr Upgrade Service	\$349.00
MCM2	Medical OSHA Manual/ 2 yr Upgrade Service	\$349.00
HCM1	Dental/Medical HIPAA Manual/1yr Upgrade Service	\$299.50
HCM2	Dental/Medical HIPAA Manual/2yr Upgrade Service	\$349.00

LAMINATED WALL CHARTS



GHS Hazardous Materials Wall Chart

This chart complies with the Globally Harmonized System for Hazard Communication and was designed to assist employees in evaluating chemical hazards and identifying protective needs when working with hazardous materials. Chemical and product labels are easily interpreted by use of rating codes and pictorials. Essential for every health facility, this chart is available in two sizes to allow for posting in a variety of places.

GHSWS	9" x 25"	\$44.99
GHSWL	17" x 35"	\$55.99



Bloodborne Compliance Wall Chart

Designed to educate and encourage employee compliance with OSHA's Bloodborne Disease Standard, this chart employs pictorials and written text in a clear and concise format. This laminated poster should be displayed in all workplaces to detail measures taken to protect your employees.

BCWC	13" x 19"	\$44.50
-------------	-----------	----------------

LAMINATED WALL CHARTS



HIPAA Compliance Wall Chart

This comprehensive HIPAA Wall Chart is a great way to keep your office staff aware of the most important aspects of the HIPAA regulations. It is laminated, and divided into sections in accordance with the regulations. A must for every office!

HWC 17" x 23"

\$48.95

Wall Chart Combo

No office should be without these wall charts, which all employers agree make the job of training simpler and faster. This product includes our three most popular wall charts:

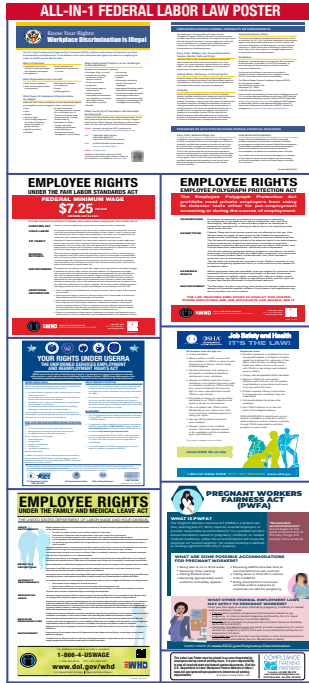


- GHS Hazardous Materials Wall chart 17" X 35"
- HIPAA Compliance Wall chart 17" X 23"
- Bloodborne Compliance Wall chart 13" X 19"

WC3

\$109.95

LAMINATED WALL CHARTS



Labor Law Wall Chart Required

Federal law mandates that the Labor Law Wall Chart must be displayed in the workplace in view of all employees. Employee information notices required are:

- Fair Labor Standard Act/Minimum Wage
- Job Safety and Health: It's the Law
- Family Medical Leave Act
- Equal Employment Opportunity
- Employee Polygraph Protection
- Uniformed Services Employment and Reemployment Rights Act
- Includes the new required Pregnant Workers Fairness Act Poster

This comprehensive all-in-one laminated wall chart includes all required information.

LLP 17 1/2" X 38"	\$49.99
--------------------------	----------------



Fire Safety Wall Chart

Once started, a fire doubles in size every 19 seconds! This high quality laminated poster serves as a reminder for all employees of how to properly respond to a fire in the workplace as well as proper use of a fire extinguisher. In addition, it helps serve as proof that fire safety training has been provided.

FSP 11" x 17"	\$39.99
----------------------	----------------



First Aid Response Wall Chart

This large colorful wall chart describes proper first aid response in the workplace and helps serve as proof that employees have been provided first aid information. The chart is carefully organized by type of emergency medical situation and will serve as a valuable reference for all employees.

FAR 22" x 26"	\$39.99
----------------------	----------------

LABELS & SIGNS

Biohazard Warning Labels Required

The Bloodborne Pathogens Standard requires the use of these labels.

BWL2	2" x 2" Labels 25 pack	\$18.95
BWL21	2" x 2" Labels 100 pack	\$46.99
BWL4	4" x 4" Labels 25 pack	\$22.50
BWL41	4" x 4" Labels 100 pack	\$58.95
BWL4W	4" x 4" Labels (waterproof) 25 pack	\$24.50
WBWL10	3" x 3" Labels (waterproof) 10 pack	\$29.99
WBLWL25	3" x 3" Labels (waterproof) 25 pack	\$46.99



Radiation Caution Labels

All radiographic equipment must be identified with this label.

RCL	1 1/2" x 4" Labels 5 pack	\$12.99
------------	------------------------------	----------------



LABELS & SIGNS



GHS Chemical Product Labels Required



These water resistant GHS chemical labels are color coded and allow for compliance with the Globally Harmonized System for Hazard Communication.

GHSC	2 1/2" x 2 1/2" Labels 25 pack	\$21.50
GHSC100	2 1/2" x 2 1/2" Labels 100 pack	\$55.99
GHCL	4" x 4" Labels 25 pack	\$28.99
GHCL100	4" x 4" Labels 100 pack	\$76.95
WGHS10	3" x 3" Labels (waterproof) 10 pack	\$29.95
WGHS25	3" x 3" Labels (waterproof) 25 pack	\$46.99

OSHA Compliance Labeling Kit

Various sized biohazard and radiation caution labels are combined with a hazardous materials wall chart, and labeling instructions to assist your office in meeting OSHA requirements for labeling. Toll-free telephone and online technical support included.



- **1** 9" x 25" GHS Hazardous Materials Wall Chart
- **40** 2.5" x 2.5" GHS labels
- **8** 4" x 4" GHS labels
- **20** 2" x 2" Biohazard labels
- **10** 4" x 4" Biohazard labels
- **5** 1.5" x 4" Radiation labels

CLK

\$142.99

LABELS & SIGNS



Variety Pack of Labels

This variety pack offers various sizes of our chemical, biohazard and radiation labels. The packet contains over 80 of our most popular labels at a great value price.



- **40** 2.5" x 2.5" GHS labels
- **8** 4" x 4" GHS labels
- **20** 2" x 2" Biohazard labels
- **10** 4" x 4" Biohazard labels
- **5** 1.5" x 4" Radiation labels

V180

\$65.99

Standard Precautions Label

Designed to protect you and your employees, these bright, adhesive backed labels should be displayed in all treatment areas. They will reinforce the most important part of your exposure control plan.



UPL 5 1/2" x 8" labels 5 pack

\$15.99

STOP! Wash Hands

These adhesive backed labels should be displayed throughout your office. Attractive Black/Red/White design.



SWHL 5 1/2" x 8" labels 5 pack

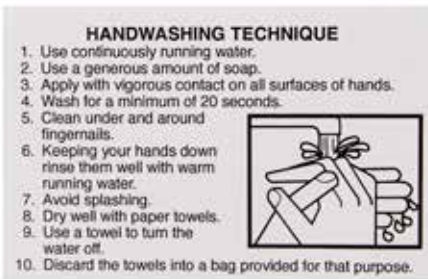
\$27.99

LABELS & SIGNS



Handwashing Technique

These adhesive backed labels should be displayed throughout your office. Attractive Black/Red/White design.



HWTL 2 3/4" x 4" labels 5 pack

\$15.99

Handwashing Technique (English/Spanish)

The Centers for Disease Control states that handwashing is one of the best ways to prevent the spread of disease. These bilingual labels will serve as a reminder to all staff members of the importance of handwashing.



HWTL-B 6" x 6" labels 2 pack

\$16.99

Laser Warning Sign

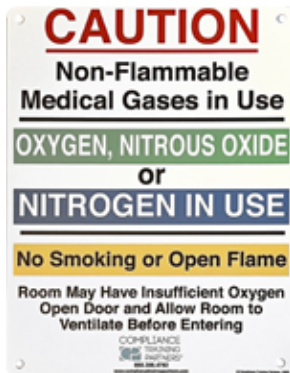
Many offices utilize a laser for various surgical procedures in the office. It is required that you place a "laser in use" warning sign in each room that the device is operated in. This durable acrylic sign meets all requirements.



LWS 10" X 7"

\$31.99

LABELS & SIGNS



Medical Gas Warning Sign Required

According to established guidelines, you must have a proper medical gas warning sign in the area where your nitrous oxide, nitrogen or oxygen tanks are stored. This durable plastic sign has pre-drilled mounting holes and will allow you to be in full compliance.

MGWS 10" X 7"	\$32.99
----------------------	----------------



Cough Etiquette Sign Required

According to Centers for Disease Control and Prevention Guidelines, signs must be posted at entrances of healthcare facilities with instructions to patients who may have symptoms of respiratory infection. This durable plastic sign has pre-drilled mounting holes and is designed to fulfill all requirements.

CEP 14" x 22"	\$32.95
CEPS 9" x 11"	\$21.95

Emergency Signs - Glow-In-The-Dark Required

OSHA requires that all "emergency exits," "exits," and "non-exits" be marked with clear, visible, illuminated signs. These lightweight signs glow in the dark for up to 8 hours. All signs meet OSHA & NFPA requirements.



EOS 10" X 7" 'Emergency Exit Only'	\$59.95
EXS 10" X 7" 'Exit'	\$59.99
NXS 10" X 7" 'Not an Exit'	\$59.99
FES 4" X 18" 'Fire Extinguisher'	\$59.99

LABELS & SIGNS



Caution Radiation Sign

A sign indicating the use of x-rays should be placed in areas of possible exposure. This plastic sign comes pre-drilled with mounting holes and will assist you in complying with your states radiographic regulations.

CRS 10" x 7"

\$32.99



Biohazard Storage

These magnetic labels allow you to designate refrigerators for biohazard (red) or food (green) storage. Specify red or green.

BSLM 4" x 4"

\$27.99



These adhesive labels are perfect for placement on cupboard doors, refrigerators or freezers which contain potential biohazards.

BSLA 4^{1/2}" x 4^{1/2}" 5 pack

\$16.99

LABELS & SIGNS



“Allergic To” Labels



These labels track allergies and other ‘alert’ conditions. They are pressure sensitive and the fluorescent chartreuse color attracts attention.

ATL 2" x 3" 100 pack

\$23.95

Medical Alert Labels



Available in two sizes, these red and white pressure sensitive labels are designed for labeling charts, x-rays and treatment correspondence.

MALL 6^{1/2}" x 1" 50 per roll

\$21.50

MALS 1^{1/2}" x 7/8" 100 per roll

\$18.99

Variety Pack of Infection Control Labels



Our most popular infection control labels are included in this pack. Adhesive backed, durable and water resistant.

VPL5 5 pack

\$32.95

LABELS & SIGNS



HIPAA Alert Labels



These colorful attention getting labels are cling-backed and stick to any surface, but can be easily removed and reused. They are designed to serve as a constant reminder for employees to follow HIPAA regulations. We recommend placing them at key points in the office such as operatories/treatment rooms and the business office.

HAL5	4" x 6" labels 5 pack	\$22.95
HAL10	4" x 6" labels 10 pack	\$37.99

HIPAA Patient Consent Forms



Refill pad of patient consent forms.

PCF	Pad of 50	\$11.50
PCFS	Pad of 50 (Spanish)	\$11.50

SPILL KITS

Master Spill Kit Required

This kit combines all of the Biological, Chemical and Mercury Spill Kit Materials.

The complete kit includes:

- BioSponge® powder
- ChemSponge® powder
- MercSponge® powder
- 1 Mercury magnet
- 1 Mercury scrubber
- 1 Pair reusable nitrile gloves
- 1 Pair safety goggles
- 1 Scooper and pan
- 3 Masks
- 5 Biohazard warning labels
- 3 Red bags for disposal of biological waste
- 3 black bags for disposal of chemical waste



MSK

\$148.95

SPR Scooper & Pan Refill

\$17.99

Mercury Spill Kit Required

Mercury hazards are eliminated with the use of this kit, which contains MercSponge® powder that binds mercury with a ferrous metal for easy pick up with an included magnet.

The complete kit includes:

- MercSponge® powder
- 1 Mercury magnet
- 1 Mercury scrubber
- 1 Pair reusable nitrile gloves
- 1 Pair safety goggles
- 3 Masks
- 3 Black chemical disposal bags



MESK

\$93.99

MER MercSponge® refill (12 oz.)

\$48.99

MSR Mercury Magnet & Scrubber

\$9.95

SPILL KITS



Biological Spill Kit Required

Eliminates the hazards of blood and other body fluids spills. This kit contains BioSponge® powder that solidifies the spill, making clean-up quick and easy.

The complete kit includes:

- BioSponge® powder
- 1 Pair reusable nitrile gloves
- 1 Pair safety goggles
- 1 Scooper and pan
- 3 masks
- 5 Biohazard warning labels
- 3 Red biological waste disposal bags



BISK	\$64.99
BIOR BioSponge® refill (8 oz.)	\$30.99

Chemical Spill Kit Required

Designed to handle spills of potentially hazardous liquids (disinfectants, acids, developer, fixer, etc.), this kit includes ChemSponge® powder to easily contain and absorb chemical spills.

The complete kit includes:

- ChemSponge® powder
- 1 Pair safety goggles
- 1 Pair reusable nitrile gloves
- 1 Scooper and pan
- 3 masks
- 5 Biohazard warning labels
- 3 Black chemical disposal bags



CHSK	\$69.50
CEMR ChemSponge® refill (16 oz.)	\$17.95

SPILL KITS



Chemo Spill Kit Required

This kit contains ChemoSponge® powder to manage chemotherapy medication spills.

The complete kit includes:

- ChemoSponge® powder
- 3 Gowns
- 3 Pairs of shoe covers
- 1 Pair safety goggles
- 6 Pairs of chemo gloves
- 3 Absorbent pads
- 1 Scooper and pan
- 3 disposable N95 respirators
- 6 Yellow chemo disposal bags



KESK	\$98.99
CSP ChemoSponge® refill (8 oz.)	\$31.99

UTILITY GLOVES

Nitrile Utility Gloves Required

When cleaning instruments, disinfecting treatment rooms or working with chemicals such as acids or corrosives (disinfectants/solvents/fixer), OSHA regulations require the use of this type of glove. These reusable nitrile gloves will help keep your office in compliance. Specify size, available in sizes XS (6) to XL (10) actual sizes are slightly larger than normal.



NUG1XS	1 pair pack	\$9.99
NUG1S	1 pair pack	\$9.99
NUG1M	1 pair pack	\$9.99
NUG1L	1 pair pack	\$9.99
NUG1XL	1 pair pack	\$9.99
*NUG12	12 pair pack	\$45.99

*Specify size

Elbow Length - Available in M or L

NUGE1M	1 pair pack	\$24.99
NUGE1L	1 pair pack	\$24.99

OSHA, Infection Control and HIPAA Compliance Made Easy with Compli™



At **Compliance Training Partners**, our training programs are designed to deliver genuine interactive content and features to maximize user comprehension in a single source. Train with the best and most experienced dental compliance experts on the rules and regulations of **OSHA, Infection Control, and HIPAA** through convenient, easy-to-follow online classes.

Compli™ will help you and your practice effortlessly advance its compliance proficiency by training your entire dental team online and at your pace while earning valuable CE credit.



- With Compli™ You Get Training:**
- Exceptional, interactive education solutions for your entire team
 - Informative, simple-to-understand material
 - Flexible, convenient training options with fully online programs
 - HIPAA training
 - OSHA & Infection Control training
 - Sexual Harassment training
 - Fraud, Waste, and Abuse training
 - Access to exclusive live CE webinars

- With Compli™ You Get Oversight:**
- Access to a centralized Compliance Dashboard for record-keeping of core areas of compliance such as weekly eyewash checks, monthly fire extinguisher checks, weekly spore testing of autoclaves, dental water unit testing and more
 - Exclusive access to the Compli™ Dental Office Audit Checklist app, which enables you to do a detailed OSHA, HIPAA and Infection Control review of your entire facility
 - Regional Manager oversight functions
 - Centralized record-keeping of your team's compliance training certificates

- With Compli™ You Get Support:**
- On-demand experienced compliance expert support via toll-free phone, email, and text
 - Assistance in responding to OSHA and HIPAA inspections
 - Guidance to required and recommended products

Compli™ Online Learning Center Yearly Subscription

1-4 locations	\$595 retail per location
5-10 locations	\$495 retail per location
11-24 locations	\$450 retail per location
25-49 locations	\$399 retail per location
50-74 locations	\$349 retail per location
75-99 locations	\$299 retail per location

Compli™ is sold as a yearly subscription service

Total Office Compliance Made Easy with

Compli™ Plus

Do you need the unlimited training that comes with Compli™ but also need the required OSHA Compliance and Infection Control Manual? Compli™ Plus will help you effortlessly advance compliance proficiency by training your entire dental team online and at your pace while earning valuable CE credit.



12
CE Credits

In States Where Applicable

Your membership includes:

- OSHA, Infection Control & HIPAA required digital compliance manuals
- HIPAA required training
- OSHA required training
- CDC Infection Control required training
- Sexual Harassment training
- Quarterly exclusive live webinars
- GHS Hazardous Materials, Bloodborne Pathogens & HIPAA compliance wall charts
- Required Federal Labor Law wall chart
- Required GHS Chemical, Biohazard & Radiation labels

Gain access to oversight tools and support:

- Centralized Compliance Dashboard for record-keeping of core areas of compliance
- Compli™ Dental Office Audit Checklist app
- Regional Manager oversight functions
- Expert compliance support via toll-free phone, email, & chat
- Assistance in responding to OSHA and HIPAA inspections
- Guidance to required & recommended products

Compli™ Plus Online Learning Center Yearly Subscription

1-4 locations	\$1,195 retail per location
5-10 locations	\$1,095 retail per location
11-24 locations	\$1,050 retail per location
25-49 locations	\$999 retail per location
50-74 locations	\$949 retail per location
75-99 locations	\$899 retail per location

Compli™ is sold as a yearly subscription service

OSHA, Infection Control, and HIPAA Compliance Made Easy with Compli™ Med

At **Compliance Training Partners**, our training programs are designed to deliver genuine interactive content and features to maximize user comprehension in a single source. Train with the best and most experienced medical compliance experts on **OSHA, Infection Control, and HIPAA** rules and regulations through convenient, easy-to-follow online classes.

Compli™ Med will help your facility effortlessly advance its compliance proficiency by training your entire medical team online and at your pace.

- With Compli™ Med You Get Training:**
- Exceptional, interactive education solutions for your entire team
 - Informative, simple-to-understand material
 - Flexible, convenient training options with fully online programs
 - HIPAA training
 - OSHA & Infection Control training
 - Sexual Harassment training
 - Fraud, Waste, and Abuse training

- With Compli™ Med You Get Oversight:**
- Access to a centralized compliance dashboard for record-keeping of core areas of compliance such as weekly eyewash checks, monthly fire extinguisher checks, weekly spore testing of autoclaves, and more
 - Exclusive access to the Compli™ Medical Office Audit Checklist app, which enables you to do a detailed OSHA, HIPAA, and Infection Control review of your entire facility
 - Regional Manager oversight functions
 - Centralized record-keeping of your team's compliance training certificates

- With Compli™ Med You Get Support:**
- On-demand experienced compliance expert support via toll-free phone, email, and online chat
 - Assistance in responding to OSHA and HIPAA inspections
 - Guidance to required and recommended products



Compli™ Med Online Learning Center Yearly Subscription

1-4 locations	\$595 retail per location
5-10 locations	\$495 retail per location
11-24 locations	\$450 retail per location
25-49 locations	\$399 retail per location
50-74 locations	\$349 retail per location
75-99 locations	\$299 retail per location

Compli™ is sold as a yearly subscription service

Total Office Compliance Made Easy with

Compli™ Med Plus

Compli™ Med Plus will help you effortlessly advance compliance proficiency by training your entire medical team online and at your pace.



Your membership includes:

- OSHA, Infection Control & HIPAA required digital compliance manuals
- HIPAA required training
- OSHA required training
- CDC Infection Control required training
- Sexual Harassment training
- Quarterly exclusive live webinars
- GHS Hazardous Materials, Bloodborne Pathogens & HIPAA compliance wall charts
- Required Federal Labor Law wall chart
- Required GHS Chemical, Biohazard & Radiation labels

Gain access to oversight tools and support:

- Centralized Compliance Dashboard for record-keeping of core areas of compliance
- Compli™ Medical Office Audit Checklist app
- Regional Manager oversight functions
- Expert compliance support via toll-free phone, email, & chat
- Assistance in responding to OSHA and HIPAA inspections
- Guidance to required & recommended products

Compli™ Plus Online Learning Center Yearly Subscription

1-4 locations	\$1,195 retail per location
5-10 locations	\$1,095 retail per location
11-24 locations	\$1,050 retail per location
25-49 locations	\$999 retail per location
50-74 locations	\$949 retail per location
75-99 locations	\$899 retail per location

Compli™ is sold as a yearly subscription service

ONLINE TRAINING PROGRAMS

OSHA and Infection Control Made Easy Online Training Program Required

OSHA requirements include an annual retraining session for all employees. This course will help fulfill these requirements and will update participants on the latest from OSHA, including the Globally Harmonized System (GHS) for Hazard Communication and the Bloodborne Disease Pathogens Standard. In addition, the course covers the Centers for Disease Control and Prevention Infection Control Guidelines.

Other topics covered include

- Means of egress
- Ionizing radiation
- Electrical safety
- Fire safety and first aid
- Hazardous materials
- Ventilation
- Recordkeeping
- OSHA inspections

Programs are per individual and include:

- Certificate of completion
- CEU certificate (Dental Clients Only)
- Toll-free telephone and online technical support
- Assistance with OSHA inspections



***No returns on Online Training**

Includes OSHA Mandated Globally Harmonized System (GHS) Training!

OSHA DENTAL



3 CEU's included with each view.

STR/VP1D STR/VP1DS (1 view for 1 person and 1 certificate of completion)	Dental or Dental Spanish	\$46.99
STR/VP6D STR/VP6DS (6 views for 6 people and 6 certificates of completion)	Dental or Dental Spanish	\$275.99
STR/VP10D STR/VP10DS (10 views for 10 people and 10 certificates of completion)	Dental or Dental Spanish	\$449.99
STR/VP25D STR/VP25DS (25 views for 25 people and 25 certificates of completion)	Dental or Dental Spanish	\$1074.99
STR/VP50D STR/VP50DS (50 views for 50 people and 50 certificates of completion)	Dental or Dental Spanish	\$2099.99
STR/VP100D STR/VP100DS (100 views for 100 people and 100 certificates of completion)	Dental or Dental Spanish	\$3999.99

OSHA MEDICAL



STR/VP1M STR/VP1MS (1 view for 1 person and 1 certificate of completion)	Medical or Medical Spanish	\$46.99
STR/VP6M STR/VP6MS (6 views for 6 people and 6 certificates of completion)	Medical or Medical Spanish	\$275.99
STR/VP10M STR/VP10MS (10 views for 10 people and 10 certificates of completion)	Medical or Medical Spanish	\$449.99
STR/VP25M STR/VP25MS (25 views for 25 people and 25 certificates of completion)	Medical or Medical Spanish	\$1074.99
STR/VP50M STR/VP50MS (50 views for 50 people and 50 certificates of completion)	Medical or Medical Spanish	\$2099.99
STR/VP100M STR/VP100MS (100 views for 100 people and 100 certificates of completion)	Medical or Medical Spanish	\$3999.99

CAL-OSHA DENTAL



3 CEU's included with each view.

STRC/VP1D STRC/VP1DS (1 view for 1 person and 1 certificate of completion)	Dental or Dental Spanish	\$46.99
STRC/VP6D STRC/VP6DS (6 views for 6 people and 6 certificates of completion)	Dental or Dental Spanish	\$275.99
STRC/VP10D STRC/VP10DS (10 views for 10 people and 10 certificates of completion)	Dental or Dental Spanish	\$449.99
STRC/VP25D STRC/VP25DS (25 views for 25 people and 25 certificates of completion)	Dental or Dental Spanish	\$1074.99
STRC/VP50D STRC/VP50DS (50 views for 50 people and 50 certificates of completion)	Dental or Dental Spanish	\$2099.99
STRC/VP100D STRC/VP100DS (100 views for 100 people and 100 certificates of completion)	Dental or Dental Spanish	\$3999.99

CALIFORNIA DENTAL PRACTICE ACT



3 CEU's included with each view.

CDPA01 CDPA0S1 (1 view for 1 person and 1 certificate of completion)	Dental or Dental Spanish	\$46.99
CDPA06 CDPA0S6 (6 views for 6 people and 6 certificates of completion)	Dental or Dental Spanish	\$275.99
CDPA10 CDPAS10 (10 views for 10 people and 10 certificates of completion)	Dental or Dental Spanish	\$449.99
CDPA025 CDPAS25 (25 views for 25 people and 25 certificates of completion)	Dental or Dental Spanish	\$1074.99
CDPA50 CDPAS50 (50 views for 50 people and 50 certificates of completion)	Dental or Dental Spanish	\$2099.99
CDPA100 CDPAS100 (100 views for 100 people and 100 certificates of completion)	Dental or Dental Spanish	\$3999.99

WA/OR OSHA DENTAL



3 CEU's included with each view.

STRWO/VP1D Dental (1 view for 1 person and 1 certificate of completion)	\$46.99
STRWO/VP6D Dental (6 views for 6 people and 6 certificates of completion)	\$275.99
STRWO/VP10D Dental (10 views for 10 people and 10 certificates of completion)	\$449.99
STRWO/VP25D Dental (25 views for 25 people and 25 certificates of completion)	\$1074.99
STRWO/VP50D Dental (50 views for 50 people and 50 certificates of completion)	\$2099.99
STRWO/VP100D Dental (100 views for 100 people and 100 certificates of completion)	\$3999.99

ONLINE TRAINING PROGRAMS



HIPAA Compliance Made Easy Online Training Program Required

This course is designed for all members of your team. The course is designed to educate participants on the requirements for HIPAA compliance in their facilities.

Topics include:

- Privacy Rule
- Security Rule
- Breach Notification Rule
- Enforcement Rule
- Omnibus Rule
- HITECH Amendment
- Hardware/software components
- Enforcement and penalties
- Inspections

Programs are per individual and include:

- Certificate of completion
- CEU certificate (Dental Clients Only)
- Toll-free telephone and online technical support
- Assistance with HIPAA inspections

*No returns on Online Training.

*CEUs available for dental clients only.



HIPAA DENTAL



2 CEU's included with each view.

HIP1AVD HIP1AVDS (1 view for 1 person and 1 certificate of completion)	Dental or Dental Spanish	\$46.99
HIP6AVD HIP6AVDS (6 views for 6 people and 6 certificates of completion)	Dental or Dental Spanish	\$275.99
HIP10AVD HIP10AVDS (10 views for 10 people and 10 certificates of completion)	Dental or Dental Spanish	\$449.99
HIP25AVD HIP25AVDS (25 views for 25 people and 25 certificates of completion)	Dental or Dental Spanish	\$1074.99
HIP50AVD HIP50AVDS (50 views for 50 people and 50 certificates of completion)	Dental or Dental Spanish	\$2099.99
HIP100AVD HIP100AVDS (100 views for 100 people and 100 certificates of completion)	Dental or Dental Spanish	\$3999.99

HIPAA MEDICAL



HIP1AVM HIP1AVMS (1 view for 1 person and 1 certificate of completion)	Medical or Medical Spanish	\$46.99
HIP6AVM HIP6AVMS (6 views for 6 people and 6 certificates of completion)	Medical or Medical Spanish	\$275.99
HIP10AVM HIP10AVMS (10 views for 10 people and 10 certificates of completion)	Medical or Medical Spanish	\$449.99
HIP25AVM HIP25AVMS (25 views for 25 people and 25 certificates of completion)	Medical or Medical Spanish	\$1074.99
HIP50AVM HIP50AVMS (50 views for 50 people and 50 certificates of completion)	Medical or Medical Spanish	\$2099.99
HIP100AVM HIP100AVMS (100 views for 100 people and 100 certificates of completion)	Medical or Medical Spanish	\$3999.99

ONLINE TRAINING



Implicit Bias in Health Care

This training focuses on the effects of implicit bias and offers solutions to reduce the risk of implicit bias in health care offices.

Through lecture and discussion, this training will teach trainees:

- The definition and history of implicit bias
- The effects of implicit bias on health care
- How to recognize implicit bias
- Controversies around implicit bias
- Strategies to reduce implicit bias in health care offices

Sexual Harassment in the Healthcare Workplace

Sexual harassment is a type of workplace discrimination and has become a prominent topic of discussion. It is found in all industries with the healthcare industry being no exception. All healthcare professionals should understand how to identify and react to workplace sexual harassment.

Following the training, attendees will be able to:

- Define and recognize sexual harassment
- Understand how to address abusive and unlawful harassment/conduct in the workplace
- Recognize various legal remedies available for victims of harassment
- Establish strategies for prevention and response to harassment
- Identify policies and documentation required for compliance
- Understand their role in preventing sexual harassment and that of their supervisors

IB1VD (1 view for 1 person and 1 certificate of completion)	\$46.99
IB6VD (6 views for 6 people and 6 certificates of completion)	\$275.99
IB10VD (10 views for 10 people and 10 certificates of completion)	\$449.99

3 CEU's included with each view for dental.

SH1VD (1 view for 1 person and 1 certificate of completion)	\$46.99
SH6VD (6 views for 6 people and 6 certificates of completion)	\$275.99
SH10VD (10 views for 10 people and 10 certificates of completion)	\$449.99

3 CEU's included with each view for dental.

ONLINE TRAINING



Human Trafficking, Child Abuse and Neglect Awareness for Healthcare Professionals

It is currently estimated that 27.6 million adults and children are victims of human trafficking. This foundational course will allow healthcare providers to learn about human trafficking and aid them in determining where and why it occurs, as well as how to identify victims and intervene on their behalf.

Following the activity, learners will be able to:

- Improve awareness and knowledge on the issue of human trafficking
- Define the types of human trafficking, its venues, and who it affects
- Recognize the warning signs of trafficking
- Identify techniques for screening and identification of human trafficking
- Identify resources for healthcare personnel to report trafficking and provide support to suspected victims

HT1VD (1 view for 1 person and 1 certificate of completion)	\$46.99
HT6VD (6 views for 6 people and 6 certificates of completion)	\$275.99
HT10VD (10 views for 10 people and 10 certificates of completion)	\$449.99

3 CEU's included with each view for dental.



Fire Safety & Disaster Training

OSHA requires emergency training and evacuation procedures for all offices. This program provides training on these important issues, to assure workplace compliance and safety. Completion of training exam yields 2 CEUs for 6 individuals.*

FSD/VP 6 views

\$75.99

ONLINE TRAINING



Pain Management: The Responsibilities and Requirements of Prescribing Schedule II Opioids

This course is designed to educate dentists and dental hygienists on current principles and techniques for the management of pain and the prevention of opioid abuse. Topics and learning objectives include:

- Definition of pain
- Types of pain
- Physiology of pain
- Oral facial pain disorders
- Drugs used to manage pain
- Prescribing strategies to reduce addiction potential
- Pain management techniques
 - Local anesthetics
 - Trigger point injections
 - Oral appliances
 - Non-traditional techniques
- Opioid awareness, the opioid crisis and addiction
- Characteristics of individuals with addiction issues
- Stages of substance abuse and typical behaviors
- Dental management strategies for addicted patients
- Post-operative pain strategies
- Regulatory requirements for prescribers
- Tools to control fear and anxiety
- Ergonomics and pain prevention for the dental team
- New products to manage pain and sensitivity

PM1VD (1 view for 1 person and 1 certificate of completion)

\$99.95

3 CEU's may be earned after completing this course

Meet Your In-Office Compliance Goals with the Compliance Training Partners App!

Gain valuable assistance in reaching your OSHA, HIPAA, and Infection Control compliance goals! This audit checklist app can help you:

- ✓ Identify your practice's compliance strengths and weaknesses
- ✓ Uncover ways to improve your overall compliance rating
- ✓ Determine specific needed compliance products
- ✓ Maintain a safe and healthy workplace

Each compliance audit report is designed to meet a specific need:

- ✓ OSHA Audit for Dentistry
- ✓ HIPAA Audit for Dentistry
- ✓ Infection Control Audit for Dentistry
- ✓ OSHA Audit for Medical Facilities
- ✓ HIPAA Audit for Medical Facilities
- ✓ Infection Control Audit for Medical Facilities



Download the **Compliance Training Partners app** today!

Don't have an account with us yet?

Sign up and create your account-- all within the app.



MONITORING PROGRAMS

Aquasafe® Dental Unit Waterline Testing System Required

The Importance of Testing Your Dental Unit Water

At Compliance Training Partners, we feel that quarterly testing of your dental unit water is a must. Why? All major equipment manufacturers recommend it and the CDC states that manufacturers recommendations must be followed. In addition the ADA recommends routine testing as does the EPA and OSAP. Not only is it truly the right thing to do, it is necessary to protect your business from liability. With the CDC stating that levels of bacteria must be below 500 Colony forming units (CFUs) and the ADA saying they must be below 200 CFUs, it is important that you know the number of CFUs for each of your operatories.

This easy-to use kit provides in-office results and describes how to resolve a poor reading. In addition, the kit provides assistance with establishing systems for continued compliance.

Features include:

- In-office reporting
- Helps to meet CDC Guidelines
- Protects patients



WTK-A	1 Unit	\$24.95
WTK-B	4 Units	\$89.95
WTK-C	8 Units	\$159.95
WTK-D	12 Units	\$199.95
WTK-E	24 Units	\$372.95

MONITORING PROGRAMS



X-RAY Monitoring Service

Experts agree that there is no safe level of radiation and even the smallest dose may cause cancer or genetic damage. Any healthcare facility may be exposing staff to unsafe levels of radiation. That's why accurately measuring and recording radiation exposure over the long term is important for your employees and your practice. The CTP Dosimeter with state-of-the-art Optically Stimulated Luminescence (OSL) technology, has the highest sensitivity available today – 10 times the sensitivity of competitive dosimeters!

Features include:

- Fastest reporting in the industry—five day average turnaround
- A lifetime exposure record is archived for safekeeping
- Personalized badges
- Web-based reporting
- Protects pregnant workers
- Includes a detailed OSHA and Infection Control access to detailed audit program!

XXMBM	Monthly Badge Service	\$169.99
XXMBQ	Quarterly Badge Service	\$109.99
XMBF	Fetal Badge Service (7 months)	\$134.99

*No returns on X-RAY Monitoring badges.



MONITORING PROGRAMS



Nitrous Oxide Monitor

Nitrous oxide levels should be maintained below a time weighted average (TWA) of 25 ppm in operating rooms and 50 ppm in dental treatment areas, according to OSHA regulations, and monitoring is recommended at least quarterly according to NIOSH (National Institute for Occupational Safety & Health). This service provides accurate, and affordable results and includes a mail-in envelope for sending monitor to our certified lab for analysis.

NOM1	1 Unit	\$110.95
NOM2	2 Units	\$202.95
NOM3	3 Units	\$289.50
NOM4	4 Units	\$362.99

*No returns on Nitrous Oxide Monitors



Formaldehyde and Glutaraldehyde Vapor Monitor Required

This monitor can be used to measure personal exposure or room concentrations of both Formaldehyde and Glutaraldehyde. The monitoring badge will be accepted as accurate in any inspection or dispute because it is validated for accuracy and analyzed by our American Industrial Hygiene Association (AIHA) accredited laboratory. Each employee who uses Formaldehyde and/or Glutaraldehyde as a regular part of their job, including handling, packaging or mailing of biopsy specimens must have their exposure monitored.

FMP1	1 Unit	\$110.95
FMP2	2 Units	\$202.95
FMP3	3 Units	\$289.50
FMP4	4 Units	\$362.99

*No returns on Formaldehyde and Glutaraldehyde Vapor Monitors.



MONITORING PROGRAMS



Ethylene Oxide Vapor Monitor Required

The Ethylene Oxide Monitor can be worn as a badge or placed in the breathing zone as an area monitor. Occupational safety standards are based on personal exposure monitoring of each employee who may be exposed to the vapor as a regular part of their job. Periodic monitoring of personal and room concentrations is required.

EOM1	1 Unit	\$110.95
EOM2	2 Units	\$202.95
EOM3	3 Units	\$289.50
EOM4	4 Units	\$362.99



Anesthetic Vapor Monitor

Provides simultaneous measurement of waste anesthetic gases including Sevoflurane, Isoflurane, Enflurane, Halothane, Desflurane and Methoxyflurane. Occupational safety standards are based on personal exposure monitoring of each employee who may be exposed to the vapor as a regular part of their job.

AGM1	1 Unit	\$110.95
AGM2	2 Units	\$202.95
AGM3	3 Units	\$289.50
AGM4	4 Units	\$362.99



SERVICES



Dispose-Alloy™ Amalgam Recycling Program Required

CTP provides a complete solution to comply with federal, state and local laws regarding amalgam recycling. Your amalgam waste is recycled at a US EPA certified facility and we provide the required *annual proof of compliance for amalgam recycling.

- Choose a 2.5 or 5 Gallon Storage/Shipping Container
- Return Shipping Carton
- FREE On-Demand Pickup and Pre-Paid Shipping**
- Waste Recycled at a US EPA Certified Facility
- Compliance Certification
- Includes a detailed OSHA and Infection Control audit program!

*Compliance for Amalgam Recycling varies from state to state. Most states recommend following the ADA's Best Practices for Amalgam Recycling. This service complies with these guidelines.

** Free shipping only within the continental US (container must be returned within 12 months from date of purchase)



ARPS	2.5 Gallon Package	\$319.95
ARPL	5 Gallon Package	\$427.99

*No returns on Dispose Alloy™ Amalgam Recycling Programs.

Tooth Disposal System Required

Proper disposal of extracted teeth poses a problem for most dental practices. The CTP Tooth Disposal System consists of a half-gallon container that includes return and disposal at our EPA approved facility. The system allows for compliance with states' regulated waste disposal laws and ADA best practices.

- Includes a detailed OSHA and Infection Control audit program!

TDS	\$149.95
------------	-----------------

*No returns on the Tooth Disposal System.



SAFETY / INFECTION CONTROL PRODUCTS



SDS Binder Required

OSHA requires you to maintain Safety Data Sheets (SDS) for all hazardous chemicals/materials in your facility. In general, every powder, liquid or cream in your office requires an SDS. This SDS Binder is designed to organize your SDS library in an OSHA compliant manner. It features a durable cover, heavy-duty D-rings, alphabetical tabs, and instructions for organization.

SDSB Binder

\$49.95



Contaminated Instrument Kaddy-Small Required

This durable plastic kaddy is specifically designed to carry contaminated sharp instruments between treatment areas and the sterilization area, as required by OSHA. It has a handy attached carrying handle and is affixed with the universal biohazard symbol. Each operator or treatment room should have a closable container such as this to transport used/contaminated instruments to the sterilization area.

SK1 11^{1/2}" x 5" x 4"

\$31.99

SAFETY / INFECTION CONTROL PRODUCTS



Contaminated Instruments Kaddy-Large Required

This sturdy red plastic container is designed to carry up to 3 large instrument cassettes containing contaminated instruments from the operator to the sterilization/instrument processing area, as required by OSHA. The universal biohazard symbol is prominently placed on the outside of the container.

SK2 17" x 12^{1/2}" x 4^{1/2}"

\$44.99



Adjustable Arm Safety Glasses Required

Offering a snug fit, these lightweight and durable fog-free safety glasses are designed for comfort and safety. Made of poly-acrylic safety glass with adjustable arms. SPECIFY: Red, Black, or Blue.

ASG 1 pair

\$12.99



Fog Free Safety Glasses Required

These durable hi-tech design glasses ensure comfort and styling with adjustable arms for a precise fit. They are made of lightweight poly - acrylic safety glass, with fog-free, anti-scratch, anti-static lenses and stylish multi-colored frames.

FSG 1 Pair

\$13.99

SAFETY / INFECTION CONTROL PRODUCTS



Side Shields Required

These durable side shields slip on to your glasses, providing the protection required by OSHA regulations.

SS1	1 pair pack	\$9.99
SS12	12 pair pack	\$22.50



Vented Safety Goggles Required

These plastic goggles are designed to fit over most personal eyewear. They are vented for free air flow, fog free, and provide protection against spray, splash or projectile injury.

VSG	1 Pair	\$12.99
-----	--------	---------



Disposable Ear Plugs

When noise levels in the workplace reach or exceed 85 decibels, for 8 hours or more, a "Hearing Conservation Program" is required by OSHA. These comfortable foam latex-free ear plugs help meet this requirement.

DEP24	24 pair	\$33.99
-------	---------	---------

SAFETY / INFECTION CONTROL PRODUCTS



LaserShields® Protective Eyewear Required

The human eye can be permanently injured from exposure to laser energy. Retinal damage occurs from exposure to 400-1400 nm, while corneal or lens damage occurs from 190 nm-400 nm and 1400-1000 nm. For this reason, OSHA requires the use of laser protective eyewear for all employees exposed to laser energy.

All LaserShields® are made in the USA and come with a lifetime warranty.

LaserShield® Universal

This attractive design provides a universal fit that is comfortable worn alone or over prescription glasses. Available in black only.

LPE1 1 pair

\$253.95



LaserShield® Magnification

For many laser procedures, clinician's desire increased magnification. The LPE 2 features not only an attractive and comfortable design, but is fitted with a 2.5X magnifying insert.

LPE2 1 pair

\$329.99



SAFETY / INFECTION CONTROL PRODUCTS



Choosing an Eyewash

OSHA requires an eyewash to be located “within the work area for emergency use.” ANZI-Z358.1-2004:6.4.2 states “It is the installer’s responsibility to ensure that combination units shall be in accessible locations that require no more than 10 seconds to reach.” Water temperature delivered by emergency equipment should be “tepid”. Tepid is defined to be between 60°F (16°C) and 100°F (38°C).

To accomplish this, you should always purchase an eyewash with an “eliminator valve”, unless you have the eyewash attached to a faucet that is ONLY used for eyewash purposes and the water is pre-adjusted to only allow “tepid” water. Wall mounted models are a good choice when you desire a dedicated eyewash station. Portable eyewashes provide a simple solution if you have a mobile clinic operation.

Aquasafe® Emergency Eyewash Station Required



This unit features an automatic shut-off valve and easily attaches to standard faucets with a removable aerator. This device is designed to meet all OSHA requirements and ANSI standards.

EESE	Emergency Eyewash Station w/Eliminator Valve	\$154.99
EES	Emergency Eyewash Station	\$145.99

Aquasafe® Emergency Eyewash Station Angled Required



This unit features an automatic shut off valve and easily adapts to goose neck faucets with a removable aerator. This unit meets all OSHA requirements and ANSI standards.

EESEA	Emergency Eyewash Station w/Eliminator Valve	\$206.99
EESA	Emergency Eyewash Station Angled	\$175.99

SAFETY / INFECTION CONTROL PRODUCTS



Aquasafe® Wall Mounted Eyewash Station Required

This durable unit is designed to function as a stand-alone unit and must be plumbed to a dedicated water line.

WMEU

\$374.99



Aquasafe® Portable Eyewash Station Required

Most portable eyewash stations do not comply with OSHA regulations. This quality unit meets all requirements, providing adequate amounts of water to both eyes in the event of an emergency.

EWP

\$414.95



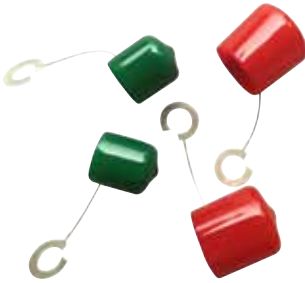
Bacteriostatic Preservative

Bacteriostatic preservative for use in portable eyewash stations. One 8 oz. (148 ml) bottle will preserve up to 20 gallons (18.9 to 75.7 L) of water for up to three months, with a shelf life of 3 years. Four bottles per carton.

BSP

\$39.95

SAFETY / INFECTION CONTROL PRODUCTS



Aquasafe® Eyewash Caps

These caps are designed to replace broken or lost caps on the CTP eyewash.

EESAC	Red 1"	\$18.99
EESC	Green 3/4"	\$18.99



Aquasafe® Eyewash Sign Required

This large durable plastic sign draws attention to the location of your eyewash station and meets all OSHA requirements for eyewash signage.

ESP	11" x 7"	\$31.50
-----	----------	---------



Aquasafe® Eyewash Label Required

This adhesive backed label mounts securely to walls or cabinets, and meets OSHA requirements for eyewash signage.

ESL	3 1/2" x 4"	\$11.99
-----	-------------	---------

SAFETY / INFECTION CONTROL PRODUCTS



Aquasafe® Eyewash Inspection Tags Required

OSHA regulations state that each eyewash station in your facility must be inspected weekly. These waterproof tags are designed to be attached directly to the eyewash and provide ample space to record your weekly inspections. Includes 5 labels and attachments.

EWIT

\$30.99

Eliminator Valve Adapter



OSHA inspectors have the authority to cite and fine workplaces where the possibility of scalding exists. If your eyewash unit is connected to a sink with both hot & cold running water, you must install a device to regulate the water temperature. This Eliminator Valve complies with OSHA requirements when attached to a conventional eyewash station.

EVA

\$61.99

CPR Pocket Microshield Required



This latex-free CPR Microshield meets today's health concerns. The soft barrier membrane conforms to the face and has a unique anti-flex one way valve to prevent contact with oral secretions. The bite block valve allows a positive airway in the head-tilt/chin-lift CPR technique. The kit also includes safety gloves and antiseptic towelettes.

CPM

\$24.50

SAFETY / INFECTION CONTROL PRODUCTS



Single Handed Needle Recapper

Our needle recapper is designed to minimize risk of accidental needle sticks. The design adapts to any needle type and is useful in every operatory or treatment room.

SHR1	1 unit	\$44.99
SHR6	6 units	\$195.99



Scalpel Blade Remover

This “Blade Mate” remover is designed to eliminate scalpel blade cuts. The blades drop safely into the sealed reservoir (stores approximately 100 blades). When full, simply drop into your regular sharps container.

SBR1	1 unit	\$11.99
SBR6	6 units	\$36.95
SBR12	12 units	\$55.99



Lab Case Disinfection Labels Required

The Centers for Disease Control (CDC) states that all outgoing dental lab cases must be disinfected and labeled as such. These adhesive backed labels are designed to comply with the CDC guidelines and provide reassurance to those individuals who may handle these lab cases, on the receiving end.

LCD100	1 1/2" x 3/4" Roll of 100	\$29.95
LCD500	1 1/2" x 3/4" Roll of 500	\$139.95

SAFETY / INFECTION CONTROL PRODUCTS



Sterilization Pouch Stamp and Pad

According to CDC infection control guidelines, sterilization packaging must have, at a minimum, “the date ...and device used, on the outside of the packaging material.” This stamp is designed to fulfill these requirements by combining it with non toxic ink pads that will withstand the heat, pressure and moisture levels of an autoclave or dry heat sterilizer. Assigning only one color per autoclave allows for easy recall of instrument packages in the event of a failed spore test. Five colors of ink are available.

SPP1	1 stamp + 1 black ink pad	\$27.99
SPP2	2 stamps + 1 black ink pad + 1 red ink pad	\$48.99
ICS	Sterilization date stamp	\$12.50
NTPN	Black colored ink pad	\$17.99
NTPR	Red colored ink pad	\$17.99
NTPB	Blue colored ink pad	\$17.99
NTPG	Green colored ink pad	\$17.99
NTPP	Purple colored ink pad	\$17.99



First-Aid Safety Kit Required



This first-aid kit is designed specifically for your employees. All basic first-aid supplies required for workplace compliance are included in this durable kit.

FASK	\$98.99
-------------	----------------

SAFETY / INFECTION CONTROL PRODUCTS



Laundry Bag & Stand Required

OSHA's Bloodborne Pathogens Standard mandates that "contaminated" laundry be placed in bags that are marked with a Biohazard symbol. This sturdy washable fluid resistant bag features a nylon draw cord, attached handles and is imprinted with the Biohazard symbol.

LB	Laundry Bag	\$47.99
LBS	*Laundry Bag Stand	\$34.99
LBC	Bag & Stand Combo	\$71.99

*Stand is designed to be used with LB Laundry Bag only.



Fire Extinguisher - ABC Rated Required

This commercial device is designed for use in areas of up to 3,000 square feet and meets all requirements for any health facility. It can be used for paper, gas, wood, flammable liquid or electrical fires.

RFE	\$110.50
-----	----------



Fire Extinguisher Inspection Tags Required

OSHA regulations state that fire extinguishers must be inspected monthly, and that this inspection must be documented. These waterproof tags are designed to be attached to your fire extinguisher and provide ample space to record your monthly inspections. Includes five labels and attachments.

FEIT	\$29.95
------	---------

SAFETY / INFECTION CONTROL PRODUCTS



AquaSafe® Evacuation System Cleaner

A bacterial-based cleaner which is safe for equipment, the environment and staff.

- Bacterial-based cleaner provides residual over-night debris removal from cuspidor drains and suction systems
- Works under all conditions, even in cold water
- Neutral PH, safe for amalgam separators and traps
- Aquasafe® leaves a fresh and clean scent at the traps and throughout the entire evacuation system
- Environmentally friendly 6 non-pathogenic bacteria provides safe and natural cleaning power
- AquaSafe® ensures a level of protection that cannot be matched by other evacuation system cleaners that simply mask odors

Incredibly Economical-256 one-quart treatments per gallon!

AQSE 64 oz. bottle

\$60.99



AquaSafe® Enzymatic Cleaner

Enzymatic Ultrasonic and Instrument Pre-Soak Solution

AquaSafe® Enzymatic Ultrasonic and Instrument Pre-Soak Solution is a highly effective and compliant enzymatic solution. It cleans blood, tissue, mucus, and other debris from instruments, burs, endodontic files, crowns, bridges dentures, partial dentures and orthodontic appliances. The product also allows for full compliance with EPA requirements by having a neutral pH, utilizing enzymatic action rather than harsh chemicals.

AEC 1 Gallon Bottle

\$55.99

*Prices are subject to change.

SAFETY / INFECTION CONTROL PRODUCTS



Infectious Waste Bags Required

These sturdy high quality red bags are imprinted with the universal Biohazard symbol making them safe for regulated medical waste disposal in all States. Available in three sizes.

Certified for Florida Disposal Requirements.

IWB4	4 gal. 25 per roll	\$16.99
IWB10	10 gal. 25 per roll	\$17.99
IWB30	30 gal. 20 per roll	\$21.95

To order, please visit ComplianceTrainingPartners.com

FAQ AND CHECKLISTS



FAQ



What is the best way to bring our office into compliance?

The comprehensive CTP OSHA Compliance Program is simple to follow and covers all aspects of the OSHA Act as well as CDC Infection Control Guidelines. The HIPAA Compliance Program will allow you to quickly achieve compliance in this important area and includes all required written policies. For large practices, Multi-site facilities, and DSOs, inquire about Compli Plus for total office compliance.

We have implemented the CTP Compliance Program in our office. What other training programs are available?

CTP offers a variety of online training programs addressing HIPAA Compliance, annual required OSHA staff training, infection control, needlestick exposure protocol, the Bloodborne Pathogens Standard and recordkeeping requirements. We have also expended our education curriculum to include Pain Management, Sexual Harassment, Implicit Bias, and Human Trafficking courses. Continuing education units (CEU's) are available for most programs.

Where do we find safety products that meet OSHA requirements?

CTP offers a full line of safety products that will allow you to comply with OSHA regulations. These include: eyewash stations; water testing programs; spill kits; fire extinguishers; safety glasses; nitrile gloves; signs; and various other required safety products. All products are available on our website, ComplianceTrainingPartners.com

What about infection control products?

We strive to bring you the best infection control products so that you can provide the safest environment possible for your patients and staff. All products are available on our website, ComplianceTrainingPartners.com

What do we do when OSHA or HIPAA regulations change?

At CTP, we constantly monitor OSHA, HIPAA, and infection control regulations. We strongly recommend our upgrade subscription service, or Compli Plus, which will keep you informed of any changes to these regulations.

What is your return policy?

If a product does not meet your needs, simply call within 30 days for a return authorization number. This number must be clearly written on the outside of the return box. Shipping and handling charges are not refundable, and a restocking fee may apply. Training materials are not returnable if opened.

HOW TO ORDER



To order, visit our website at [ComplianceTrainingPartners.com](https://www.compliancetrainingpartners.com) or contact Compliance Training Partners by phone **888.388.4782**

Delivery Terms:

All orders are subject to a shipping and handling charge. Orders are shipped UPS ground.

Price Policy:

While every effort has been made to provide you with the lowest possible prices, occasionally unanticipated manufacturer increases make it necessary to change the prices listed in this catalog. We regret that price increases may sometimes occur.

Back-orders:

Occasionally because of increased demand or vendor delays, it is necessary to back-order an item. You will be notified of any such delays along with an anticipated ship date.

Returns and Exchanges:

Please inspect your shipment upon arrival. If you need to return an item, please call our Customer Service representative to obtain a return authorization number. Returned products must have been purchased within the previous 30 days and a 15% restocking fee will be applied. We ask that all goods be in resalable condition to receive full credit. *Some products are non-refundable, see product description for details.

Mailing Address:

1919 Federal Blvd, Ann Arbor, MI 48103

Y | N TRAINING

- Are employees provided annual training on all applicable OSHA regulations including Hazard Communications, Bloodborne Pathogens, and TB?
- Are new employees provided training before performing duties?
- Are training records kept for a minimum of 3 years?
- Are all safety practices and procedures updated annually?

HAZARD COMMUNICATION

- Is a written hazard communication program customized, reviewed, updated annually and accessible to all employees?
- Are SDS Sheets on file?
- Has a chemical inventory list containing all hazardous materials been created?
- Are all hazardous products labeled properly?
- Do all employees understand the emergency spill procedures?
- Is there a spill kit available?
- Have employees been trained on use of the eyewash station?
- Is the eyewash station labeled and functioning properly?

BLOODBORNE PATHOGENS

- Are waste containers in operatory or treatment room labeled with a biohazard label?
- Are waste containers covered or have a drop through opening?
- Are employees offered the Hepatitis B vaccination free and within 10 days of task assignment?
- Does a written exposure control plan exist and is it accessible to all employees?
- Is the plan reviewed and updated at least annually?
- Is all food and drink kept out of clinical and laboratory areas?
- Is handwashing performed before and after treating patients?
- Are all CDC Infection Control Guidelines for infection control being followed?

GENERAL HOUSEKEEPING, STORAGE, WALKING SURFACES, MEANS OF EGRESS

- Are all areas of the office clean, uncluttered, and sanitary?
- Are all passageways and aisles marked and free from obstruction?
- Are lighted or glow in the dark exit signs in place?
- Are there at least 2 means of egress (exits)?
- Does the office have proper ventilation and air quality control (HVAC fan on during working hours, filters changed regularly)?
- Are electrical and medical gas closets free from stored items?

ELECTRICAL

- Are all the electrical devices properly grounded (3 prong plug)?
- Are all electrical outlets in kitchens, bathrooms, labs and areas near water on a GFI circuit?
- Have you checked that extension cords are not in use?
- Are all cords and plugs free of visible wear?

MEDICAL EMERGENCIES, SAFETY & FIRST AID

- Is at least one person on each shift trained in First Aid and Cardiopulmonary Resuscitation?
- Do all staff members know the proper post exposure procedure?
- Is the eyewash station being inspected and tested weekly?
- Are monthly inspections of the facility being conducted, including the first aid kit and fire extinguisher?
- Is there an eyewash station within 25 feet or 10 seconds of hazardous chemicals?
- Is a fire extinguisher available?
- Have employees been trained on proper use of the fire extinguisher?
- Do stairs have a handrail with adequate headroom and lighting?

GRINDING EQUIPMENT & COMPRESSED GASES

- Is grinding equipment in good and safe condition with guards and shields?
- Are the gas cylinders (nitrous oxide/oxygen) properly chained or cabled to a wall?
- Are gas cylinders properly labeled?
- Are employees trained on compressed gas safety?

EMPLOYEE FILES / RECORD KEEPING

- Do employee files contain medical reports of workplace accidents or injuries?
- Do employee files contain vaccination history?
- Do employee files contain hepatitis B vaccination record or declination form?
- Are medical records maintained for the duration of employment plus 30 years?

PERSONAL PROTECTIVE EQUIPMENT (PPE)

- Is proper personal protective equipment provided and maintained by the employer?
- Are gloves and masks changed after each patient?
- Are employees trained to put on and remove PPE?
- Are protective eyewear/shields worn?
- Are long sleeve lab coats and/or gowns worn and changed when visibly soiled and at the end of the day?
- Are nitrile or synthetic gloves provided to those who have sensitivity to latex?
- Is handwashing performed before and after gloving?
- During laser procedures, is laser protective eyewear available and used?
- During bonding/light curing procedures, are protective glasses or shields used?

POSTERS AND SIGNS PROPERLY DISPLAYED

- Is the Federal Minimum Wage poster displayed?
- Is the OSHA 3165 poster displayed?
- Is the Equal Opportunity Employer poster displayed?
- Is the Family Medical Leave Act poster displayed (50 or more employees)?
- Is the Uniformed Service Employment and Reemployment Rights Act poster displayed?
- Is the Employee Polygraph Protection Act poster displayed?
- Is there an emergency evacuation plan?
- Are all state specific posters displayed where required?
- Is a housekeeping schedule posted?

LAUNDRY

- Is soiled laundry placed in marked bags or containers labeled with the biohazard symbol?
- Is protective clothing either laundered in-house or by a professional service?

SHARPS

- Is there a sharps log available for documenting exposure incidents?
- Are sharps containers readily accessible in the area of use?
- Are filled containers transported by a biohazardous waste hauler?
- Are employees using a singled handed needle recapping technique or a needle recapping device?
- Are filled sharps containers picked up at the time interval mandated by your state?
- Are reusable contaminated sharps transported in a closed leak-proof container?

NON-SHARP REGULATED WASTE

- Is saturated gauze, cotton and other absorbent waste placed in a red bag?
- Is human tissue placed in a red bag?
- Is regulated waste placed in closable, leak proof, biohazard labeled containers for pick up?

MONITORING

- Are exposed employees wearing radiation dosimeters as required?
- If nitrous oxide is used, are nitrous monitors used quarterly as recommended?

DISCLAIMER OF WARRANTY

The employer is ultimately responsible for safety and compliance in their workplace and familiarity with all rules, laws and regulations that may apply. Compliance Training Partners, L.L.C. as well as its agents, dealers and distributors cannot be held responsible for any legal actions, citations, penalties or fines that may result from failure to comply COMPLIANCE TRAINING PARTNERS, LLC AS WELL AS ITS AGENTS, DEALERS AND DISTRIBUTORS HEREBY DISCLAIMS ANY AND ALL REPRESENTATIONS, CONDITIONS AND WARRANTIES, WHETHER EXPRESS OR IMPLIED, ORAL OR WRITTEN, STATUTORY OR OTHERWISE, INCLUDING WITHOUT LIMITATION THE IMPLIED WARRANTIES OR CONDITIONS OF MERCHANTABILITY OR FITNESS FOR THE PURPOSE. At no time shall COMPLIANCE TRAINING PARTNERS, LLC, ITS AGENTS, DEALERS OR DISTRIBUTORS, be responsible for consequential, incidental or special damages, whether for loss of profits or otherwise, or for damages for fundamental breach of contract or breach of a fundamental term. COMPLIANCE TRAINING PARTNERS, LLC'S AND ITS AGENTS, DEALERS AND DISTRIBUTORS obligation to Buyer for defective services is limited to a refund of fees actually received from Buyer. At no time shall COMPLIANCE TRAINING PARTNERS, LLC'S, AND ITS AGENTS, DEALERS AND DISTRIBUTORS liability for any service provided by and supplied by it exceed the purchase price of such service. Warranty claims shall be made upon occurrence. COMPLIANCE TRAINING PARTNERS, LLC AND ITS AGENTS, DEALERS AND DISTRIBUTORS shall have no liability and no warranty of any kind for any failure or breakdown of a service not provided or controlled by it and unless it is fully paid for the services. COMPLIANCE TRAINING PARTNERS, LLC AND ITS AGENTS, DEALERS AND DISTRIBUTORS shall have no liability and no warranty of any kind for any service used for any purpose which CTP did not fully supervise, participate and/or complete. Please see our website, www.hptcinc.com for full disclaimer.

To order, please visit [ComplianceTrainingPartners.com](https://www.compliancetrainingpartners.com)

Y | N

TRAINING

- Are employees provided annual training on all applicable OSHA regulations including Hazard Communications, Bloodborne Pathogens, and TB?
- Are new employees provided training before performing duties?
- Are training records kept for a minimum of 3 years?
- Are all safety practices and procedures updated annually?

HAZARD COMMUNICATION

- Is a written hazard communication program customized, reviewed, updated annually and accessible to all employees?
- Are SDS Sheets on file?
- Has a chemical inventory list containing all hazardous materials been created?
- Are all hazardous products labeled properly?
- Do all employees understand the emergency spill procedures?
- Is there a spill kit available?
- Have employees been trained on use of the eyewash station?
- Is the eyewash station labeled and functioning properly?

BLOODBORNE PATHOGENS

- Are waste containers in operatory or treatment room labeled with a biohazard label?
- Are waste containers covered or have a drop through opening?
- Are employees offered the Hepatitis B vaccination free and within 10 days of task assignment?
- Does a written exposure control plan exist and is it accessible to all employees?
- Is the plan reviewed and updated at least annually?
- Is all food and drink kept out of clinical and laboratory areas?
- Is handwashing performed before and after treating patients?
- Are all CDC Infection Control Guidelines for infection control being followed?

GENERAL HOUSEKEEPING, STORAGE, WALKING SURFACES, MEANS OF EGRESS

- Are all areas of the office clean, uncluttered, and sanitary?
- Are all passageways and aisles marked and free from obstruction?
- Are lighted or glow in the dark exit signs in place?
- Are there at least 2 means of egress (exits)?
- Does the office have proper ventilation and air quality control (HVAC fan on during working hours, filters changed regularly)?
- Are electrical and medical gas closets free from stored items?

ELECTRICAL

- Are all the electrical devices properly grounded (3 prong plug)?
- Are all electrical outlets in kitchens, bathrooms, labs and areas near water on a GFI circuit?
- Have you checked that extension cords are not in use?
- Are all cords and plugs free of visible wear?

MEDICAL EMERGENCIES, SAFETY & FIRST AID

- Is at least one person on each shift trained in First Aid and Cardiopulmonary Resuscitation?
- Do all staff members know the proper post exposure procedure?
- Is the eyewash station being inspected and tested weekly?
- Are monthly inspections of the facility being conducted, including the first aid kit and fire extinguisher?
- Is there an eyewash station within 25 feet or 10 seconds of hazardous chemicals?
- Is a fire extinguisher available?
- Have employees been trained on proper use of the fire extinguisher?
- Do stairs have a handrail with adequate headroom and lighting?

EQUIPMENT & COMPRESSED GASES

- Are medical gas cylinders properly chained or cabled to a wall?
- Are gas cylinders properly labeled?
- Are employees trained on compressed gas safety?

EMPLOYEE FILES / RECORD KEEPING

- Do employee files contain medical reports of workplace accidents or injuries?
- Do employee files contain vaccination history?
- Do employee files contain hepatitis B vaccination record or declination form?
- Are medical records maintained for the duration of employment plus 30 years?

PERSONAL PROTECTIVE EQUIPMENT (PPE)

- Is proper personal protective equipment provided and maintained by the employer?
- Are gloves and masks changed after each patient?
- Are employees trained to put on and remove PPE?
- Are protective eyewear/shields worn?
- Are long sleeve lab coats and/or gowns worn and changed when visibly soiled and at the end of the day?
- Are nitrile or synthetic gloves provided to those who have sensitivity to latex?
- Is handwashing performed before and after gloving?
- During laser procedures, is laser protective eyewear available and used?

POSTERS AND SIGNS PROPERLY DISPLAYED

- Is the Federal Minimum Wage poster displayed?
- Is the OSHA 3165 poster displayed?
- Is the Equal Opportunity Employer poster displayed?
- Is the Family Medical Leave Act poster displayed (50 or more employees)?
- Is the Uniformed Service Employment and Reemployment Rights Act poster displayed?
- Is the Employee Polygraph Protection Act poster displayed?
- Is there an emergency evacuation plan?
- Are all state specific posters displayed where required?
- Is a housekeeping schedule posted?

LAUNDRY

- Is soiled laundry placed in marked bags or containers labeled with the biohazard symbol?
- Is protective clothing either laundered in-house or by a professional service?

SHARPS

- Is there a sharps log available for documenting exposure incidents?
- Are sharps containers readily accessible in the area of use?
- Are filled containers transported by a biohazardous waste hauler?
- Are employees using a singled handed needle recapping technique or a needle recapping device?
- Are filled sharps containers picked up at the time interval mandated by your state?
- Are reusable contaminated sharps transported in a closed leak-proof container?

NON-SHARP REGULATED WASTE

- Is saturated gauze, cotton and other absorbent waste placed in a red bag?
- Is human tissue placed in a red bag?
- Is regulated waste placed in closable, leak proof, biohazard labeled containers for pick up?

MONITORING

- Are exposed employees wearing radiation dosimeters as required?
- If formaldehyde, ethylene oxide or halogenated anesthetic gas are used, is monitoring being performed as required?

DISCLAIMER OF WARRANTY

The employer is ultimately responsible for safety and compliance in their workplace and familiarity with all rules, laws and regulations that may apply. Compliance Training Partners, L.L.C. as well as its agents, dealers and distributors cannot be held responsible for any legal actions, citations, penalties or fines that may result from failure to comply COMPLIANCE TRAINING PARTNERS, LLC AS WELL AS ITS AGENTS, DEALERS AND DISTRIBUTORS HEREBY DISCLAIMS ANY AND ALL REPRESENTATIONS, CONDITIONS AND WARRANTIES, WHETHER EXPRESS OR IMPLIED, ORAL OR WRITTEN, STATUTORY OR OTHERWISE, INCLUDING WITHOUT LIMITATION THE IMPLIED WARRANTIES OR CONDITIONS OF MERCHANTABILITY OR FITNESS FOR THE PURPOSE. At no time shall COMPLIANCE TRAINING PARTNERS, LLC, ITS AGENTS, DEALERS OR DISTRIBUTORS, be responsible for consequential, incidental or special damages, whether for loss of profits or otherwise, or for damages for fundamental breach of contract or breach of a fundamental term. COMPLIANCE TRAINING PARTNERS, LLC'S AND ITS AGENTS, DEALERS AND DISTRIBUTORS obligation to Buyer for defective services is limited to a refund of fees actually received from Buyer. At no time shall COMPLIANCE TRAINING PARTNERS, LLC'S, AND ITS AGENTS, DEALERS AND DISTRIBUTORS liability for any service provided by and supplied by it exceed the purchase price of such service. Warranty claims shall be made upon occurrence. COMPLIANCE TRAINING PARTNERS, LLC AND ITS AGENTS, DEALERS AND DISTRIBUTORS shall have no liability and no warranty of any kind for any failure or breakdown of a service not provided or controlled by it and unless it is fully paid for the services. COMPLIANCE TRAINING PARTNERS, LLC AND ITS AGENTS, DEALERS AND DISTRIBUTORS shall have no liability and no warranty of any kind for any service used for any purpose which CTP did not fully supervise, participate and/or complete. Please see our website, www.hptcinc.com for full disclaimer.

To order, please visit ComplianceTrainingPartners.com

Y | N PERSONAL PROTECTIVE EQUIPMENT

Masks, Protective Eyewear and Face Shields

- Do employees wear surgical masks during procedures likely to generate splashes or sprays of blood or saliva?
- Do employees wear eye protection with solid side shields or a face shield during procedures that are likely to generate splashes or sprays of blood or saliva?
- Do employees change masks between patients and during patient treatment if the mask becomes wet or visibly contaminated?
- Is PPE removed before leaving the work area?
- Is hand hygiene performed immediately after removal of PPE?

Gloves

- Do employees wear gloves for potential contact with blood, body fluids, mucous membranes, non-intact skin or contaminated equipment?
- Do employees change gloves between patients?
- Do employees wear puncture and chemical-resistant utility gloves when cleaning instruments and performing housekeeping tasks involving blood or OPIM (other potentially infectious materials)?
- Do employees remove gloves that are torn, cut or punctured and perform hand hygiene before putting on new gloves?

Protective Clothing

- Do employees wear protective clothing (e.g. reusable or disposable gown, lab coat, or uniform) that is long sleeved and covers personal clothing as well as skin (e.g. forearms) likely to be soiled with blood, saliva or OPIM?
- Do employees change protective clothing if visibly soiled and immediately or as soon as possible if penetrated by blood or OPIM?

RESPIRATORY HYGIENE/COUGH ETIQUETTE

- Are signs posted at entrances with instructions to patients with symptoms of respiratory infection?
- Are tissue and no-touch receptacles for disposal of tissue available?
- Are resources available to perform hand hygiene in waiting areas?
- Are face masks available for coughing patients and other symptomatic individuals who enter the office?
- Are all employees educated on recognition of signs, symptoms and transmission of TB?
- Is a written TB infection control plan available to all employees?
- Has baseline TB testing (TST) been performed on all employees who may have contact with possible TB active patients?

HAND HYGIENE

- Is hand hygiene performed when hands are visibly soiled; before and after each patient; before and after gloving; and whenever touching contaminated surfaces?
- Is a surgical scrub performed before putting on sterile surgical gloves, which must be used in all surgical procedures (e.g. biopsy, periodontal surgery, apical surgery, implant surgery, and surgical extractions)?

SHARPS SAFETY

- Are engineering controls used to prevent injuries (e.g. needle re-capping device, scalpel blade remover)?
- Are work practice controls used to prevent injuries (e.g. one-handed scoop technique, not breaking or bending needles)?
- Do employees use either one-handed scoop technique or a mechanical device designed for holding the needle cap when re-capping needles?
- Are sharps disposed of in a puncture resistant sharps container located as close as possible to the area in which items are used?
- Are reusable contaminated sharps transported in a closed leak-proof container?

SAFE INJECTION PRACTICES

- Are injections prepared using an aseptic technique, in a clean area free from contaminants or contact with blood, body fluids or contaminated equipment?
- Are needles and syringes used for only one patient?
- Is the dental cartridge syringe appropriately cleaned and heat sterilized before use on another patient?
- Is the rubber septum on a medication vial disinfected with alcohol before piercing?
- Are medication containers (single and multi-dose vials, ampules and bags) entered with a new needle and a new syringe?
- Are single-dose vials, ampules and bags or bottle of intravenous solutions used for only one patient?
- Leftover contents of single-dose vials, ampules and bags of intravenous solutions are not combined for later use.

When using multi-dose medication vials:

- Are multi-dose vials dedicated to individual patients whenever possible?
- Are multi-dose vials which are used for more than one patient kept in a centralized medication area?
- Are multi-dose vials dated when first opened and discarded within 28 days unless the manufacturer specifies a shorter or longer date for the opened vial?
- Are fluid infusion and administration sets (i.e. IV bags, tubing and connections) used for one patient only?

INSTRUMENT STERILIZATION AND DISINFECTION OF PATIENT-CARE ITEMS

- Is the instrument processing area separated into 4 sections: A) Receiving, cleaning and decontamination, B) Preparation/packaging, C) Sterilization and D) Storage?
- Are reusable critical and semi-critical dental items and devices cleaned and heat sterilized according to the manufacturer's instructions before using on patients (e.g. high speed handpieces, low speed motors and handpiece components, endodontic instruments, air-water syringe tips)?
- Are single-use devices discarded after one use and never used for more than one patient?
- Are work practice controls that minimize contact with sharp instruments used and appropriate PPE worn if manual cleaning is necessary (e.g. puncture resistant utility gloves)?
- Are items thoroughly cleaned and visually inspected for residual contamination before sterilization?
- Is an enzymatic cleaner or detergent used for pre-cleaning and discarded according to the manufacturer's instructions?
- Are instruments appropriately packaged for sterilization after pre-cleaning?
- Is a chemical indicator used internally and externally on all sterilization packaging?
- Are FDA-cleared medical devices designed for sterilization (autoclaves and dry heat sterilizers) used according to the manufacturer's instructions?
- Is a biological indicator used at least weekly and with every load containing implantable devices?
- Are sterile packages labeled, at a minimum, with the sterilizer used and the date of sterilization?
- Are sterilization records maintained (i.e. mechanical, chemical and biological) in compliance with state and local regulations?
- Are sterile packages inspected for integrity and, are compromised packages reprocessed before use?
- After sterilization, are dental devices and instruments stored in such a manner that sterility is not compromised?
- Are reusable, heat sensitive, semi-critical items that cannot be replaced by heat stable or disposable high level disinfected according to the manufacturer's instructions?
- Are X-ray sensors heat sterilized between patients and covered with a FDA cleared barrier? If this is not done they are cleaned and disinfected between patients with an EPA registered intermediate-level disinfectant, then covered with and FDA cleared barrier.
- Are X-ray sensor holding or positioning devices heat sterilized or high-level disinfected between patients?

ENVIRONMENTAL INFECTION CONTROL

- Are clinical contact surfaces either barrier covered or cleaned and disinfected after each patient, using an EPA registered intermediate level disinfectant?
- Are cleaners and disinfectants used according to manufacturer's instructions?
- Is regulated medical waste handled and disposed of according to local, state and federal regulations?
- Are burs, polishing points, rag wheels, etc., sterilized or disinfected between patients or disposable replacements used?
- Is PPE used when handling items in the dental laboratory?
- Are contaminated items (e.g. bites, impressions, models) disinfected using an EPA registered intermediate level disinfectant?
- Are laboratory cases disinfected, and labeled as such, before being sent out?

HOUSEKEEPING SURFACES

- Are walls, sinks and floors routinely cleaned with detergent and water or an EPA registered disinfectant/detergent?
- Are mops and cloths cleaned after use and allowed to dry?
- Are fresh cleaning and disinfecting solutions prepared daily?

DENTAL UNIT WATER QUALITY

- Dental unit waterline treatment products/devices are used to ensure that water meets EPA regulatory standards for drinking water (<500 CFU/ml of heterotrophic water bacteria)?
- Is sterile saline or sterile water used as a coolant/irrigant when performing surgical procedures?
- Is dental unit water tested quarterly, as recommended, to ensure that it is below 500 CFU of heterotrophic water bacteria?

TRAINING

- Is training conducted at least annually for all employees and immediately for new employees?
- Has someone in the office been designated to be in charge of infection control?

DISCLAIMER OF WARRANTY

The employer is ultimately responsible for safety and compliance in their workplace and familiarity with all rules, laws and regulations that may apply. Compliance Training Partners, L.L.C. as well as its agents, dealers and distributors cannot be held responsible for any legal actions, citations, penalties or fines that may result from failure to comply COMPLIANCE TRAINING PARTNERS, LLC AS WELL AS ITS AGENTS, DEALERS AND DISTRIBUTORS HEREBY DISCLAIMS ANY AND ALL REPRESENTATIONS, CONDITIONS AND WARRANTIES, WHETHER EXPRESS OR IMPLIED, ORAL OR WRITTEN, STATUTORY OR OTHERWISE, INCLUDING WITHOUT LIMITATION THE IMPLIED WARRANTIES OR CONDITIONS OF MERCHANTABILITY OR FITNESS FOR THE PURPOSE. At no time shall COMPLIANCE TRAINING PARTNERS, LLC, ITS AGENTS, DEALERS OR DISTRIBUTORS, be responsible for consequential, incidental or special damages, whether for loss of profits or otherwise, or for damages for fundamental breach of contract or breach of a fundamental term. COMPLIANCE TRAINING PARTNERS, LLC'S AND ITS AGENTS, DEALERS AND DISTRIBUTORS obligation to Buyer for defective services is limited to a refund of fees actually received from Buyer. At no time shall COMPLIANCE TRAINING PARTNERS, LLC'S, AND ITS AGENTS, DEALERS AND DISTRIBUTORS liability for any service provided by and supplied by it exceed the purchase price of such service. Warranty claims shall be made upon occurrence. COMPLIANCE TRAINING PARTNERS, LLC AND ITS AGENTS, DEALERS AND DISTRIBUTORS shall have no liability and no warranty of any kind for any failure or breakdown of a service not provided or controlled by it and unless it is fully paid for the services. COMPLIANCE TRAINING PARTNERS, LLC AND ITS AGENTS, DEALERS AND DISTRIBUTORS shall have no liability and no warranty of any kind for any service used for any purpose which CTP did not fully supervise, participate and/or complete. Please see our website, www.hptcinc.com for full disclaimer.

Y | N PERSONAL PROTECTIVE EQUIPMENT

Masks, Protective Eyewear and Face Shields

- Do employees wear surgical masks during procedures likely to generate splashes or sprays of blood or saliva?
- Do employees wear eye protection with solid side shields or a face shield during procedures that are likely to generate splashes or sprays of blood or saliva?
- Do employees change masks between patients and during patient treatment if the mask becomes wet or visibly contaminated?
- Is PPE removed before leaving the work area?
- Is hand hygiene performed immediately after removal of PPE?

Gloves

- Do employees wear gloves for potential contact with blood, body fluids, mucous membranes, non-intact skin or contaminated equipment?
- Do employees change gloves between patients?
- Do employees wear puncture and chemical-resistant utility gloves when cleaning instruments and performing housekeeping tasks involving blood or OPIM (other potentially infectious materials)?
- Do employees remove gloves that are torn, cut or punctured and perform hand hygiene before putting on new gloves?

Protective Clothing

- Do employees wear protective clothing (e.g. reusable or disposable gown, lab coat, or uniform) that is long sleeved and covers personal clothing as well as skin (e.g. forearms) likely to be soiled with blood, saliva or OPIM?
- Do employees change protective clothing if visibly soiled and immediately or as soon as possible if penetrated by blood or OPIM?

RESPIRATORY HYGIENE/COUGH ETIQUETTE

- Are signs posted at entrances with instructions to patients with symptoms of respiratory infection?
- Are tissue and no-touch receptacles for disposal of tissue available?
- Are resources available to perform hand hygiene in waiting areas?
- Are face masks available for coughing patients and other symptomatic individuals who enter the office?
- Are all employees educated on recognition of signs, symptoms and transmission of TB?
- Is a written TB infection control plan available to all employees?
- Has baseline TB testing (TST) been performed on all employees who may have potential for contact with a TB active patient?

HAND HYGIENE

- Is hand hygiene performed when hands are visibly soiled; before and after each patient; before and after gloving; and whenever touching contaminated surfaces?
- Is a surgical scrub performed before putting on sterile surgical gloves, which must be used for all surgical procedures?

SHARPS SAFETY

- Are engineering controls used to prevent injuries (e.g. safety needles, needle re-capping device, scalpel blade remover)?
- Are work practice controls used to prevent injuries (e.g. one-handed scoop technique, not breaking or bending needles)?
- Do employees use either one-handed scoop technique or a mechanical device designed for holding the needle cap when re-capping needles?
- Are sharps disposed of in a puncture resistant sharps container located as close as possible to the area in which items are used?
- Are reusable contaminated sharps transported in a closed leak-proof container?

SAFE INJECTION PRACTICES

- Are injections prepared using an aseptic technique, in a clean area free from contaminants or contact with blood, body fluids or contaminated equipment?
- Are needles and syringes used for only one patient?
- Is the rubber septum on a medication vial disinfected with alcohol before piercing?
- Are medication containers (single and multi-dose vials, ampules and bags) always entered with a sterile needle and syringe?
- Are single-dose vials, ampules and bags or bottle of intravenous solutions used for only one patient?
- Leftover contents of single-dose vials, ampules and bags of intravenous solutions are not combined for later use.

When using multi-dose medication vials:

- Are multi-dose vials dedicated to individual patients whenever possible?
- Are multi-dose vials which are used for more than one patient kept in a centralized medication area?
- Are multi-dose vials dated when first opened and discarded within 28 days unless the manufacturer specifies a shorter or longer date for the opened vial?
- Are fluid infusion and administration sets (i.e. IV bags, tubing and connections) used for one patient only?

INSTRUMENT STERILIZATION AND DISINFECTION OF PATIENT-CARE ITEMS

- Is the instrument processing area separated into 4 sections: A) Receiving, cleaning and decontamination, B) Preparation/packaging, C) Sterilization and D) Storage?
- Are reusable critical and semi-critical items and devices cleaned and heat sterilized according to the manufacturer's instructions before using on patients?
- Are single-use devices discarded after one use and never used for more than one patient?
- Are work practice controls that minimize contact with sharp instruments used and appropriate PPE worn if manual cleaning is necessary (e.g. puncture resistant utility gloves)?
- Are items thoroughly cleaned and visually inspected for residual contamination before sterilization?
- Is an enzymatic cleaner or detergent used for pre-cleaning and discarded according to the manufacturer's instructions?
- Are instruments appropriately packaged for sterilization after pre-cleaning?
- Is a chemical indicator used internally and externally on all sterilization packaging?
- Are FDA-cleared medical devices designed for sterilization (autoclaves and dry heat sterilizers) used according to the manufacturer's instructions?
- Is a biological indicator used at least weekly and with every load containing implantable devices?
- Are sterile packages labeled, at a minimum, with the sterilizer used and the date of sterilization?
- Are sterilization records maintained (i.e. mechanical, chemical and biological) in compliance with state and local regulations?
- Are sterile packages inspected for integrity and, are compromised packages reprocessed before use?
- After sterilization, are medical devices and instruments stored in such a manner that sterility is not compromised?
- Are reusable, heat sensitive, semi-critical items that cannot be replaced by heat stable or disposable high level disinfected according to the manufacturer's instructions?

ENVIRONMENTAL INFECTION CONTROL

- Are clinical contact surfaces either barrier covered or cleaned and disinfected after each patient, using an EPA registered intermediate level disinfectant?
- Are cleaners and disinfectants used according to manufacturer's instructions?
- Is regulated medical waste handled and disposed of according to local, state and federal regulations?
- Are contaminated items disinfected using an EPA registered intermediate level disinfectant?

HOUSEKEEPING SURFACES

- Are walls, sinks and floors routinely cleaned with detergent and water or an EPA registered disinfectant/detergent?
- Are mops and cloths cleaned after use and allowed to dry?
- Are fresh cleaning and disinfecting solutions prepared daily?

TRAINING

- Is training conducted at least annually for all employees and immediately for new employees?
- Has someone in the office been designated to be in charge of infection control?

DISCLAIMER OF WARRANTY

The employer is ultimately responsible for safety and compliance in their workplace and familiarity with all rules, laws and regulations that may apply. Compliance Training Partners, L.L.C. as well as its agents, dealers and distributors cannot be held responsible for any legal actions, citations, penalties or fines that may result from failure to comply COMPLIANCE TRAINING PARTNERS, LLC AS WELL AS ITS AGENTS, DEALERS AND DISTRIBUTORS HEREBY DISCLAIMS ANY AND ALL REPRESENTATIONS, CONDITIONS AND WARRANTIES, WHETHER EXPRESS OR IMPLIED, ORAL OR WRITTEN, STATUTORY OR OTHERWISE, INCLUDING WITHOUT LIMITATION THE IMPLIED WARRANTIES OR CONDITIONS OF MERCHANTABILITY OR FITNESS FOR THE PURPOSE. At no time shall COMPLIANCE TRAINING PARTNERS, LLC, ITS AGENTS, DEALERS OR DISTRIBUTORS, be responsible for consequential, incidental or special damages, whether for loss of profits or otherwise, or for damages for fundamental breach of contract or breach of a fundamental term. COMPLIANCE TRAINING PARTNERS, LLC'S AND ITS AGENTS, DEALERS AND DISTRIBUTORS obligation to Buyer for defective services is limited to a refund of fees actually received from Buyer. At no time shall COMPLIANCE TRAINING PARTNERS, LLC'S, AND ITS AGENTS, DEALERS AND DISTRIBUTORS liability for any service provided by and supplied by it exceed the purchase price of such service. Warranty claims shall be made upon occurrence. COMPLIANCE TRAINING PARTNERS, LLC AND ITS AGENTS, DEALERS AND DISTRIBUTORS shall have no liability and no warranty of any kind for any failure or breakdown of a service not provided or controlled by it and unless it is fully paid for the services. COMPLIANCE TRAINING PARTNERS, LLC AND ITS AGENTS, DEALERS AND DISTRIBUTORS shall have no liability and no warranty of any kind for any service used for any purpose which CTP did not fully supervise, participate and/or complete. Please see our website, www.hptcinc.com for full disclaimer.

Y | N

GENERAL

- The practice management software selected is HIPAA compliant and is the latest updated version.
- The HIPAA Coordinator has been appointed. This person may also serve as the Privacy Officer and/or Security Officer.
- A written training program has been developed for the training of all employees on all aspects of HIPAA as it relates to the office.
- Training logs/contracts have been developed to document that training has occurred.
- A competent and experienced IT organization that understands how to set up a secure system has been selected to set up and maintain the computer system.
- Sanction policies have been implemented which outline disciplinary actions based on the severity of the HIPAA violation.
- Any sanctions or actions imposed by the office on the employee have been documented, signed and dated. A copy is maintained in the employee file.

PRIVACY

- The Privacy Officer has been appointed. The individual serves as the primary expert on all privacy matters and reports to the HIPAA Coordinator.
- Privacy training has been provided and documented for all new employees.
- A written Privacy Policy Plan exists and is reviewed/updated annually.
- The Notice of Privacy contains the necessary information to meet the requirements of the Privacy Rule (use and disclosure, patient's rights, covered entity's responsibilities).
- A written Notice of Privacy Policy is provided on or prior to the first delivery of service, prominently displayed and posted on the office's website.
- All patients have signed a written acknowledgment stating they have been offered a copy of the Notice of Privacy Policy.
- Authorization forms are used to obtain approval to use or disclose PHI for all non-TPO (treatment, payment, health care operations) related purposes.
- Employees are granted access to PHI based on their assigned job responsibility.
- A process for confidential communication with patients has been implemented.
- All employees have signed a Non-disclosure/Confidentiality Agreement.
- Business Associate Agreements have been signed by all business associates as defined by HIPAA law and the office maintains a list of all business associates.
- Business Associates and their subcontractors (should they utilize them) are aware of their "downstream" responsibility.
- A policy exists for Breach Notification of the patient, should a breach of their PHI occur.

SECURITY

Technical Safeguards

There are access control policies and procedures, which include:

- Unique User Identification - assign a unique name and/or number for identifying and tracking user identity.
- Emergency Access Procedure - establish and implement as needed, procedures for obtaining necessary E-PHI during an emergency.
- Automatic Logoff - implement electronic procedures that terminate an electronic session after a predetermined time of inactivity.
- Encryption and Decryption - implement a mechanism to encrypt and decrypt E-PHI.

- There are audit controls which include: Hardware, software and/or procedural mechanisms that record and examine activity in information systems that contain or use E-PHI.
- There are mechanisms to authenticate E-PHI and to corroborate that E-PHI has not been altered or destroyed in an unauthorized manner.
- Authentication - there are procedures to verify that a person or entity seeking access to E-PHI is the one claimed.
- Integrity Controls - there are security measures exist to ensure that electronically transmitted E-PHI is not improperly modified without detection until disposed of.
- Encryption - mechanisms to encrypt E-PHI when sending it electronically have been implemented.

PHYSICAL SAFEGUARDS

There are Facility Access Controls, which include:

- Contingency Operations - procedures that allow facility access in support of restoration of lost data in the event of an emergency.
- Facility Security Plan - policies and procedures to safeguard the facility and the equipment from unauthorized physical access, tampering and theft.
- Access Control and Validation - procedures to control and validate a person's access to facilities based on their role or function (visitor control and control of access to software programs for testing).
- Maintenance Records - policies and procedures to document repairs and modifications to the physical components of a facility which are related to security (hardware, walls, doors and locks).
- Workstation Use - policies and procedures that specify the proper functions to be performed and the way those functions are to be performed.
- Workstation Security - physical safeguards for all workstations that access E-PHI to restrict access to unauthorized users.

There are Device and Media Controls, which include:

- Disposal - policies and procedures to address the final disposition of E-PHI and/or the hardware on which it was stored.
- Media Re-Use - procedures for removal of E-PHI from electronic media before the media is made available for reuse.
- Accountability - records of the movements of hardware and electronic media and any person responsible for the movement.
- Data Backup and Storage - a retrievable, exact copy of E-PHI when needed.

ADMINISTRATIVE SAFEGUARDS

There are a Security Management Processes in place, which include:

- The Security Officer has been appointed. This person serves as the primary expert on all security matters.
- Risk Analysis was performed to see where PHI is being used and stored in order to determine all potential HIPAA violations.
- Risk Management - sufficient measures exist to reduce these risks to an appropriate level.
- Sanction Policy - a sanction policy exists for those employees who fail to comply.
- Information Systems Activity Reviews - regular reviews of system activity, logs audit trails, etc.
- Protection Against Malware - procedures for guarding against, detecting and reporting malicious software.
- Login monitoring - monitoring of logins to systems and reporting of discrepancies is conducted.
- Password Management - there are procedures for creating, changing and protecting passwords.
- Response and Reporting - identification, documentation and response to security incidents is performed.
- Contingency Plan - there are accessible backups of E-PHI and there are procedures in place to restore any lost data.
- Emergency Mode - a system has been established to enable continuation of critical business processes for protection and security of E-PHI while operating in emergency mode.

MISCELLANEOUS

- Off-site, encrypted backups are performed regularly.
- Business class HIPAA compliant firewalls are installed and functioning properly.
- The network is scanned for ports that should be blocked.
- If a wireless system is used, it is business class and encrypted.
- Server data is encrypted.
- The operating system software is tested annually.
- The server has been physically secured in a locked room, cabinet, or cage.
- The firewall has been set to only allow access to websites needed for business operations.
- Only the business owner has the “key” code for the computer system and separate wireless networks exist for patient and business use.



SECURITY ANALYST CHECKLIST

To be completed in conjunction with your IT professional.

ARE FIREWALL AND ROUTER CONFIGURATION STANDARDS ESTABLISHED AND IMPLEMENTED THROUGHOUT THE OFFICE TO INCLUDE THE FOLLOWING:

Y | N NOTES

- Is there a formal process for approving and testing all network connections and changes to the firewall and router configurations? _____
- Is there a current network diagram that documents all connections in the office and other networks, including any wireless networks? _____
- Is there a process to ensure the diagram is kept current and in a location that is easily accessible to all staff members? _____
- Is there a firewall implemented at each internet connection in the office? i.e. between local networks and wireless networks? _____
- Is the current network diagram up-to-date and consistent with HIPAA firewall configuration standards? _____

Do firewall and router configurations include a documented list of services, protocols and ports that are open or can be accessed? _____

Is there a justification and approval for each listed above? _____

Does the office review firewall and router configurations at least every six months? _____

Is the office or technician for the office verifying that all available updates and patches to the router and firewall are being installed monthly, quarterly or annually? _____

Are firewall and router rules reviewed at least every six months? _____

Do firewall and router configurations restrict connections between untrusted networks and trusted network systems protecting databases in the network? _____

Is direct public access prohibited between the Internet and the internal networks holding patient data? _____

Are anti-spoofing methods implemented to detect and block forged sourced IP addresses from entering the network? _____

Are only established connections permitted into the network? _____

Are measures in place to prevent the disclosure of private IP addresses and routing information to the Internet? _____

Are all disclosures of private IP addresses and routing information to external entities authorized? _____

Are security policies and operational procedures for managing firewalls documented? _____

COMPUTER SYSTEMS AND NETWORK COMPONENTS

Are vendor-supplied defaults always changed before installing a system on the network? _____

Are default or guest accounts removed or disabled before installing a system on the network? _____

Are encryption keys changed from default at installation and changed when an employee with access to the private keys leave the company? _____

Are administrative passwords to network devices changed when an employee with access to that information leaves the company? _____

Are default passwords on routers or access points from third parties changed at installation? _____

Is firmware on the router and wireless devices updated to support security from hacking, encryption viruses etc. _____

Are there proper anti-virus systems in place on each device that is on the network? _____

Are anti-virus systems checked for updates? _____

Are anti-virus programs capable of detecting, removing, and protecting against all known types of malicious software (i.e. viruses, trojans, spyware, adware, rootkits and encryption viruses installed) on the computer system? _____

STORED DATA

Is the data storage amount and retention time compliant with legal, regulatory and business requirements? _____

Are there defined processes in place for securely deleting data when no longer needed for legal, regulatory, and or business reasons? _____

Are there specific retention requirements for the data that is held in your industry? _____

Does the office have written documentation to support retention requirements? _____

Is there a backup of the data? _____

Is the backup properly managed? _____

Who is responsible for daily follow-up of the backups? _____

Is there a policy in place for hourly, daily, weekly or monthly backups? _____

Are the backups held on site? _____

If stored on removable media, is the removable media encrypted? _____

- Are all backups encrypted? _____
- Is the office utilizing cloud-based backups? _____
- Are cloud-based solutions HIPAA compliant and did the cloud company sign a BAA? _____
- Does the office have access to the passwords or encryption keys for these backups? _____
- Does the office have a plan for obtaining backups in a timely manner? _____
- Is there a policy in place for a data breach? _____
- Are appropriate facility entry controls in place to limit and monitor physical access to the network devices including routers, firewalls, servers and workstations? _____
- Are there video cameras or access-control mechanisms in place to monitor physical access? _____
- Are physical and/or logical controls in place to restrict access to publicly accessible networks jacks (i.e. waiting rooms etc.)? _____
- Is media or data sent outside the office encrypted to protect the sensitive patient information? _____
- Is the office using encrypted emails or a service to send sensitive patient information? _____

For more information on HIPAA Compliance Internet Security, please visit our website at:
<https://ComplianceTrainingPartners.com/Reference-Materials/#internet>



Hazard Communication Standard Labels

OSHA has updated the requirements for labeling of hazardous chemicals under its Hazard Communication Standard (HCS). All labels are required to have pictograms, a signal word, hazard and precautionary statements, the product identifier, and supplier identification. A sample revised HCS label, identifying the required label elements, is shown on the right. Supplemental information can also be provided on the label as needed.



U.S. Department of Labor

For more information:



www.osha.gov (800) 321-OSHA (6742)

SAMPLE LABEL

CODE _____ Product Name _____	} Product Identifier	
Company Name _____ Street Address _____ City _____ State _____ Postal Code _____ Country _____ Emergency Phone Number _____		
Keep container tightly closed. Store in a cool, well-ventilated place that is locked. Keep away from heat/sparks/open flame. No smoking. Only use non-sparking tools. Use explosion-proof electrical equipment. Take precautionary measures against static discharge. Ground and bond container and receiving equipment. Do not breathe vapors. Wear protective gloves. Do not eat, drink or smoke when using this product. Wash hands thoroughly after handling. Dispose of in accordance with local, regional, national, international regulations as specified.		Signal Word Danger Highly flammable liquid and vapor. May cause liver and kidney damage. } Hazard Statements
In Case of Fire: use dry chemical (BC) or Carbon Dioxide (CO ₂) fire extinguisher to extinguish. First Aid If exposed call Poison Center. If on skin (or hair): Take off immediately any contaminated clothing. Rinse skin with water.		



Etiquetas Estándar para la Comunicación de Peligro

De acuerdo con su Norma de Comunicación de Peligro (HCS), la OSHA ha actualizado los requisitos para las etiquetas de los productos químicos peligrosos. Todas las etiquetas se requieren incluir pictogramas, una palabra de advertencia, indicaciones de peligro, consejos de prudencia, identificación del producto y la identificación del proveedor. A la derecha se presenta la muestra de una etiqueta modificada de acuerdo con la HCS, que indica los elementos obligatorios. La etiqueta puede contener también información suplementaria según sea necesario.



Departamento de Trabajo de los EE. UU.

Para más información:



www.osha.gov (800) 321-OSHA (6742)

ETIQUETA DE MUESTRA

CÓDIGO _____ Nombre del producto _____	} Identificación del producto	
Nombre de la empresa _____ Dirección _____ Ciudad _____ Estado _____ Código postal _____ País _____ Número de teléfono de emergencia _____		
Mantener el contenedor herméticamente cerrado. Almacenar en un lugar fresco, bien ventilado y cerrado bajo llave. Mantener alejado de fuentes de calor, chispas o llama abierta. No fumar. Usar sólo con herramientas que no generen chispas. Usar equipo eléctrico a prueba de explosiones. Tomar medidas de precaución contra descargas estáticas. Fijar y conectar a tierra el equipo contenedor y receptor. No respirar los vapores. Usar guantes protectores. Abstenerse de comer, beber o fumar cuando se usa este producto. Lavarse muy bien las manos después de manejar este producto. Desechar el producto según las especificaciones y los reglamentos locales, regionales, nacionales e internacionales.		Palabra de advertencia Peligro Líquido y vapores muy inflamables. Puede provocar daños al hígado y los riñones. } Indicaciones de peligro
En caso de incendio: usar un extintor de polvo químico (tipo BC) o de dióxido de carbono (CO ₂). Primeros auxilios Si hay exposición a este producto, llamar al Centro de Control de Intoxicaciones. En caso de contacto con la piel o el cabello: quitar de inmediato toda la ropa contaminada. Lavar la piel con agua.		

TO ORDER visit
ComplianceTrainingPartners.com/Shop/

COMPLIANCE TRAINING PARTNERS®

REDEEM ACCESS CODE

\$0.00


Login


Search products.. Search


About Shop by Category Compliance Training Redeem Access Code Resources Catalogs Contact


Shop


Top Sellers

- 

Nitrous Oxide Monitor
\$92.50 - \$299.95
- 

Mercury Spill Kit
\$93.99
- 

MercSponge Spill Powder Refill (12 oz)
\$48.99
- 

X-Ray Monitoring Badge
\$80.99 - \$164.95
- 

Water Test Kit
\$24.95 - \$372.95



ComplianceTrainingPartners.com

P. 888.388.4782

1919 Federal Blvd, Ann Arbor, MI 48103



ComplianceTrainingPartners.com
P. 888.388.4782